

# „Digital Dialogue“ Agenda | September 22, 2020

01.  
8AM | 3PM

Keynote – The future of  
#digital transformation

Anton Kotov

Chief Strategy Officer | Chief Digital Officer, ABB Electrification

02.  
9AM | 4PM

Empowering data-driven  
decisions - Overview of  
ABB's digital solutions

Andrea Temporiti

Head of Digital, ABB Electrification

03.  
10AM | 5PM

Digitalization of data centers

Dave Sterlace

Global Head of Technology Data Center Solutions, ABB

04.  
11AM | 6PM

The “Digital Feedback Loop” –  
turning Data into Action

Roger Mueller

Industry Executive Manufacturing Western Europe, Microsoft

Please wait. The webinar session is about to start soon!

---

# Andrea Temporiti

Head of Digital  
ABB Electrification

Empowering data-driven  
decisions - Overview of  
ABB's digital solutions

✉ [andrea.temporiti@it.abb.com](mailto:andrea.temporiti@it.abb.com)

in [andreatemporiti](#)







ANDREA TEMPORITI | HEAD OF DIGITAL, ABB ELECTRIFICATION

# ABB Ability™ “Digital Dialogue” webinar

Empowering data-driven decisions - Overview of ABB's digital solutions





ENERGY MANAGEMENT

ASSET MANAGEMENT

BUILDING MANAGEMENT

E-MOBILITY



# What is ABB Ability™

Know more. Do more. Do better. Together!



ABB Ability™ offers **devices, systems, solutions, services and application programming interfaces (APIs)** enabling you to know more, do more, do better, together.



The offering includes more than **200 digital solutions** allowing you to **optimize, monitor, control and predict your assets performance and health.**



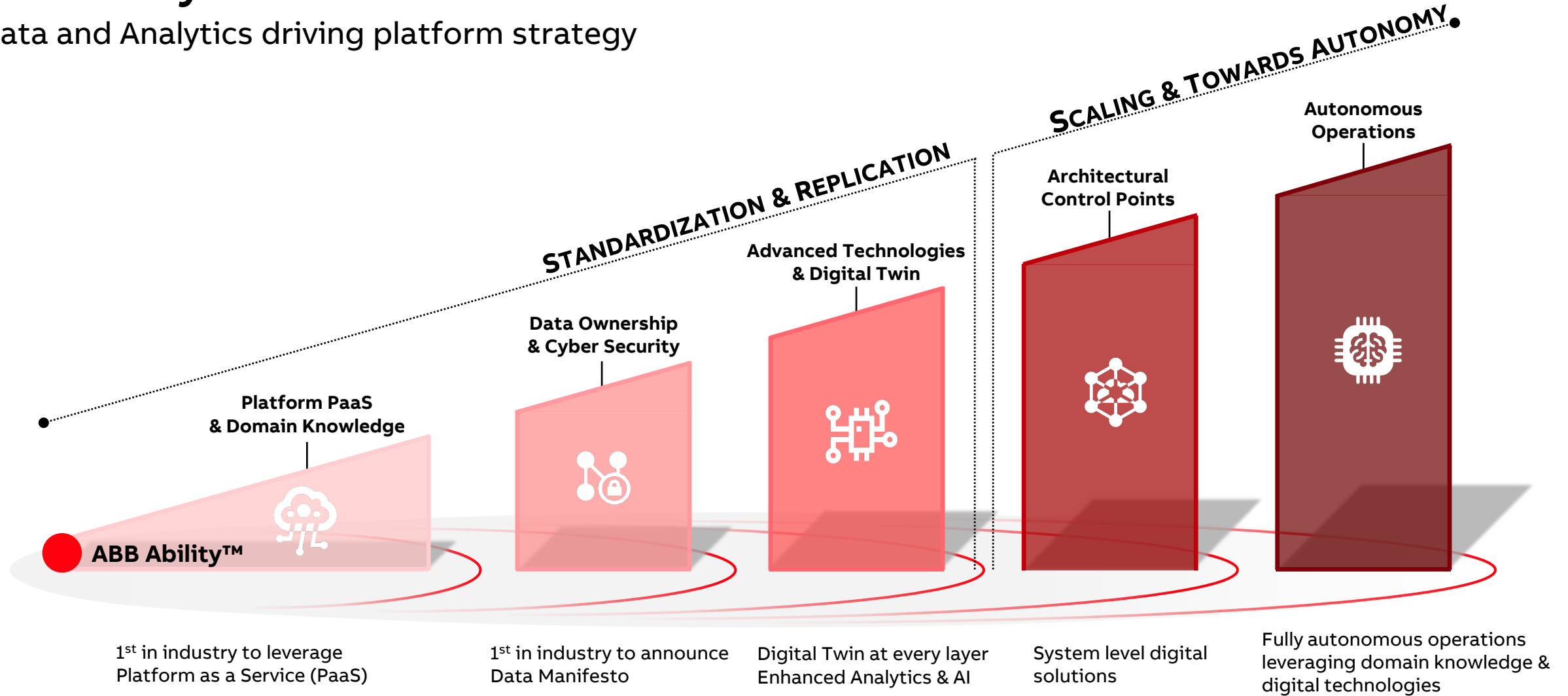
These digitally connected devices, systems and digital-enabling services are **powered by a common technology platform and cloud infrastructure**



The ABB Ability™ platform leverages Microsoft Azure to provide an **open, globally available, digital ecosystem** for customers, partners, suppliers and developers.

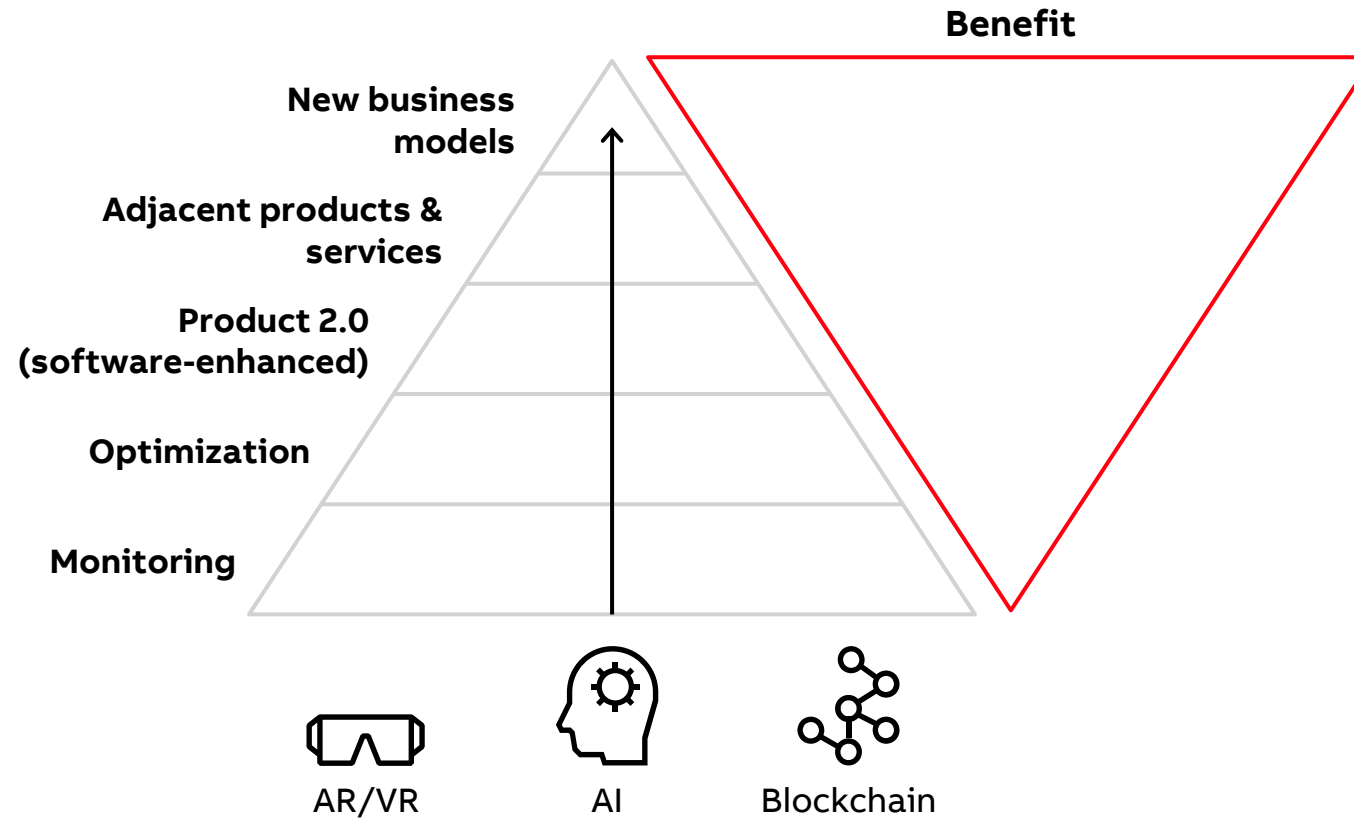
# ABB Ability evolution

Data and Analytics driving platform strategy



# Value hierarchy: aka “Maslow’s hierarchy” for IoT

Creating vs capturing value



# ABB Ability™

Providing data-driven insights that enable you to reduce costs, increase comfort, and drive efficiency



## **OPTIMIZING COSTS**

Optimize equipment performance to reduce energy consumption, maintenance costs and other operating expenses.



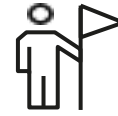
## **EMPOWERING DATA-DRIVEN DECISIONS**

Use data to optimize energy consumption, save costs and increase ROI.



## **IMPROVING RELIABILITY**

Control and customize every aspect of your environment thanks to a personalized view of your energy management system.



## **OPTIMIZING COMFORT**

Our solutions provide the robust data you need to improve reliability and availability while minimizing risk and operating costs.



## **INCREASING FLEXIBILITY**

Pre-configured and customizable to the unique needs of your industry, organization and use case.




## **MAXIMIZING OPERATIONAL CAPABILITIES**


Optimize energy consumption, increase ROI and ensure reliability




# ABB Ability™

Explore our digital solutions

 Energy Management

 Asset Management

 Building Management

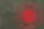
 E-Mobility

ABB Ability™ makes buildings, industries and infrastructure smarter, safer and more sustainable, ensuring reliability, protection and optimization



---

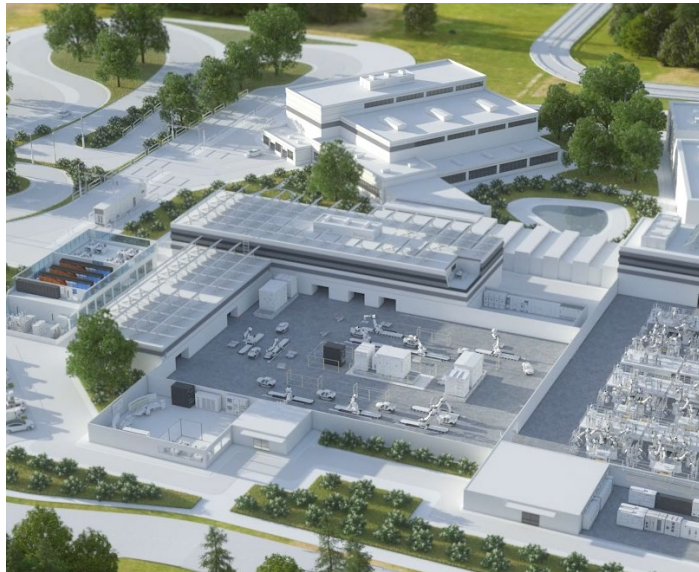
ABB Ability™ solutions leverage the vast amount of data, helping you make real-time, data-driven decisions about your assets, energy usage and electrical infrastructure investments.

**Energy management** solutions to improve efficiency and performance

1. **ABB Ability™ Energy Manager**
2. **ABB Cylon Active Energy**



To learn more, please join tomorrow's session „Energy management solutions for increased efficiency”





---

ABB Ability™ solutions leverage the vast amount of data, helping you make real-time, data-driven decisions about your assets, energy usage and electrical infrastructure investments.

**Asset management** solutions to reduce unscheduled maintenance costs

1. **ABB Ability™ Asset Manager**
2. **ABB Ability™ Condition Monitoring for electrical system and for switchgears**
3. **ABB Ability™ Asset Health for UPS**



To learn more, please join tomorrow's session „How to keep reliable electrification”





---

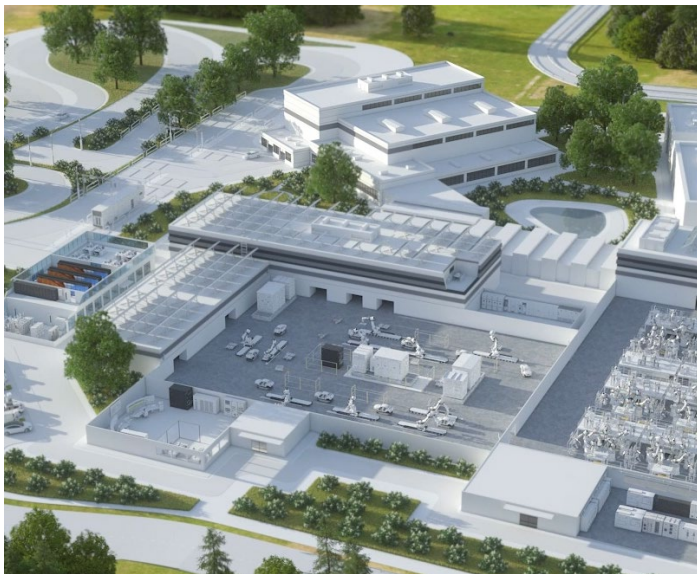
ABB Ability™ solutions leverage the vast amount of data, helping you make real-time, data-driven decisions about your assets, energy usage and electrical infrastructure investments.

**Building management** solutions enable better management, increase safety and comfort for occupants and improve security through remote monitoring

- ABB i-bus® KNX
- ABB-free@home®
- ABB-secure@home
- ABB-Welcome, Welcome IP, SmartIP



To learn more, please join Thursdays' session „How to make buildings smarter and more comfortable”



**Building  
Management**



---

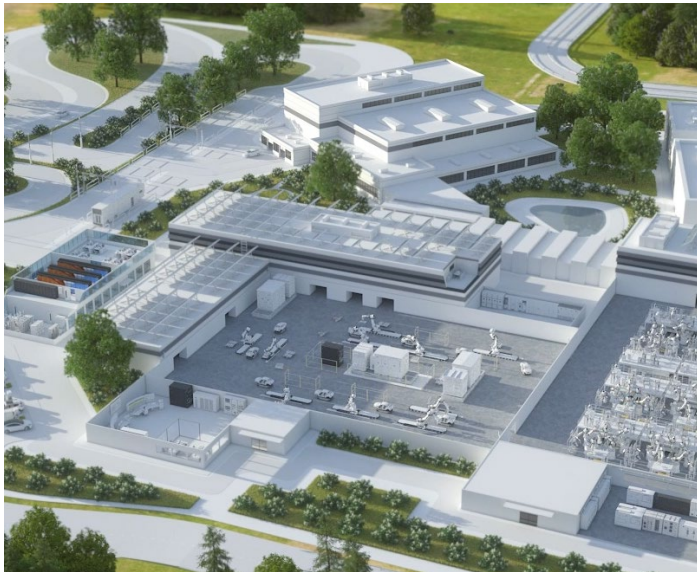
ABB Ability™ solutions leverage the vast amount of data, helping you make real-time, data-driven decisions about your assets, energy usage and electrical infrastructure investments.

**E-mobility** solutions enable fast global service and pro-active maintenance

1. **Fast charging road-side stations**
2. **Single-home residential charging**
3. **eBus, commercial and industrial fleet charging**



To learn more, please join tomorrow's session „How to reduce cost of ownership of EV chargers”



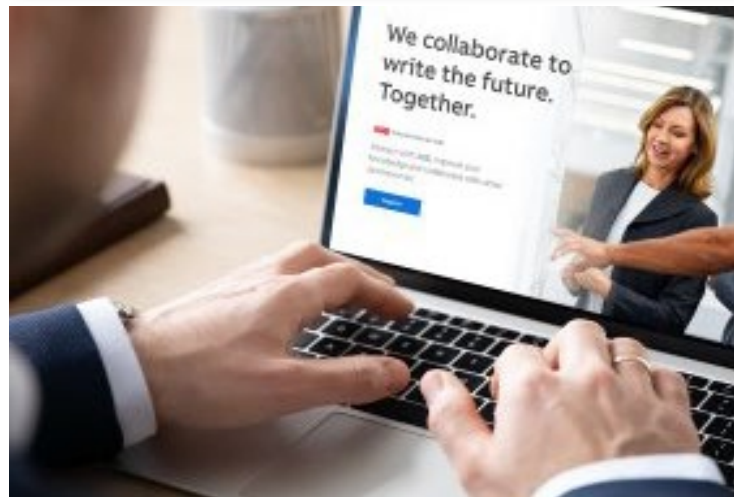
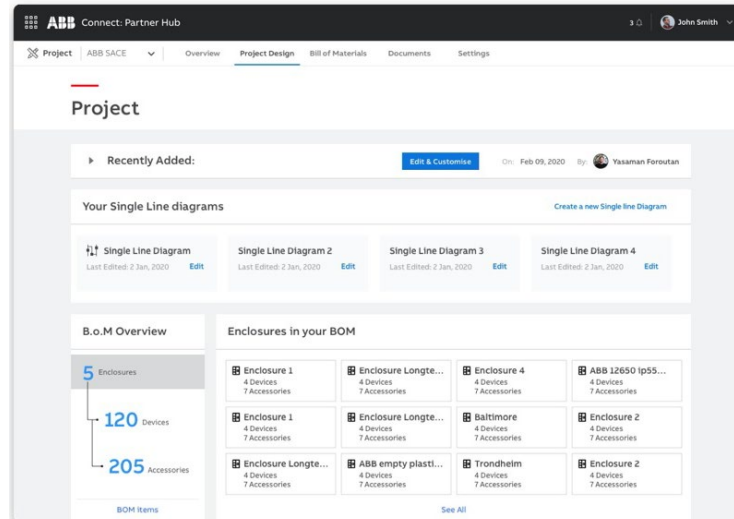
# ABB Connect Partner Hub

Join our dynamic, online platform that connects customers directly with key professionals, such as system integrators, and ABB Ability™ digital solutions and services.

<https://partnerhub.connect.abb.com/>

and

<https://new.abb.com/about/our-businesses/electrification/abb-ability/partner-hub>





# Coming soon!

## ABB Ability™ Energy and Asset Manager



Improving overall performance

You can save up to...

- 20% on energy bills
- 100% on unplanned labor
- 40% on maintenance costs
- 30% in operational costs



**Q&A**





**ABB**