

2024

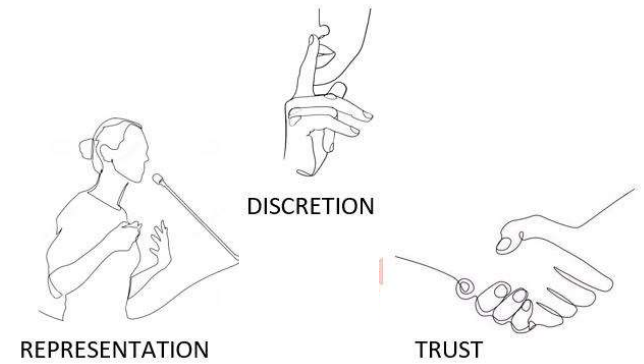
**Employee Council Motion & Robotics, ABB Switzerland.
We work between backstage and arena**



—
Agenda

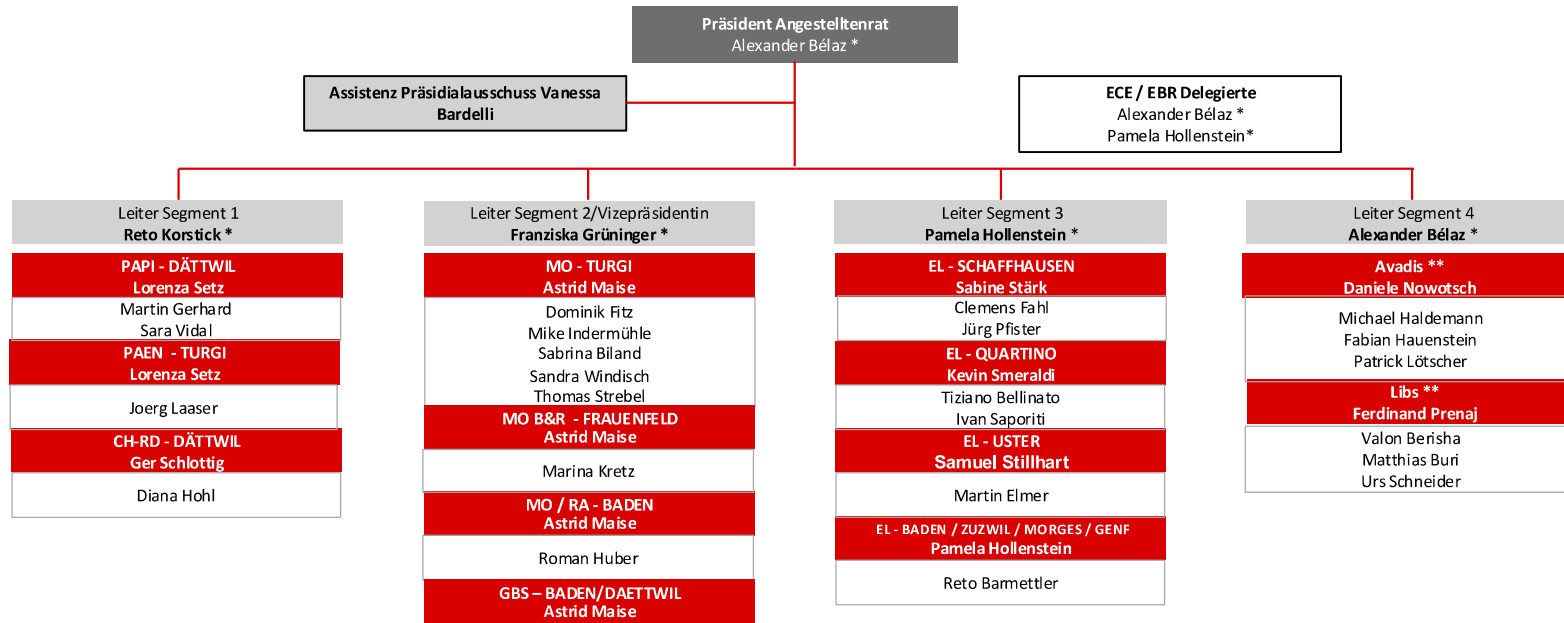


- Organization
- Introduction
- Areas of impact
- Questions



Employee's Council ABB Switzerland - Organisation

April 2024





—

Motion Team
Works Council
Your contacts

Employee Council Team Motion & Robotics

WE ARE THE LINK BETWEEN HR, MANAGEMENT AND EMPLOYEES
 WE ACCOMPANY YOU IN TURBULENT TIMES
 WE OFFER YOU A PROTECTIVE CLOUD



Franziska
Grüninger
Segmentleiterin
Angestelltenrat
Turgi

Astrid
Maise
Sektionsleiterin
Angestelltenrat
Dättwil

Thomas
Strebel
StV. Sektionsleitung
Turgi

Sandra
Windisch
Angestelltenrätin
Turgi

Roman
Huber
Angestelltenrat
Baden

Dominik
Fritz
Angestelltenrat
Turgi

Marina
Kretz
Angestelltenrätin
Frauenfeld

Mike
Indermühle
Angestelltenrat
Turgi

Sabrina
Biland
Angestelltenrätin
Turgi



WE ARE FREQUENTLY ON SITE AND LOOK FORWARD TO GETTING IN TOUCH WITH YOU PERSONALLY



—

Who we are?

What are we doing?

What are we doing? Where are we involved?

We, the Works Council of ABB Switzerland (AR), receive wishes, suggestions, requests and complaints from you employees.

We represent your interests towards the management, the business units and ABB Switzerland Ltd.

Above all, we support you GVA employees (MK03, MK10/20) in your dealings with colleagues and supervisors.

Hence the slogan "We work between backstage and arena".

Areas of collaboration

- Management: Wage negotiations, regular exchanges
- Network: Labour law issues
- Projects: Shift work, remote work policy
- Regulations: Bonus regulations, working hours, etc.
- Triage: Stay at work, social counselling, HR
- Implementation of collective labour agreement (CEA)
- PDA, cautions, dismissals
- Employees Switzerland: courses & CEA
- Active social plan
- Health protection and labour safety

We will take time for what is important: You!



CONFIDENTIALITY

We treat your concerns with **absolute confidentiality**.

We offer you **protection** and **support** when you **actively approach us**.

Our mission is to work with you to find a solution to your current concerns.

You choose the works council that suits you best.

REPRESENT

We look at every situation neutrally and give you appropriate feedback.

We **represent** your concerns.

If necessary, we have a large network (within the AR, HR, social counselling, Stay at work, etc.) and make a triage **at your request**.



TIME

We adapt to your possibilities. Be it on-site, remote, hybrid or off-site.

We'll be with you on condition that it's benefits you.

Don't wait too long. Contact us early.

CONSULTATIONS

We distinguish between **case consultations** and **mandate work**.

Case consultations are usually initial discussions and evaluation of the situation, as well as initial ideas and assistance.

Mandate work: Here we really get down to business. After your written mandate, we make a **decision together:** do we take the superiors and HR on board to continue working, or not.

Without your mandate, we **do not** become involved in talks with **third parties**.



CLA EMPLOYEES

We represent all CLA employees of Motion & Robotics.

This means that MK03 as well as MK10/20 are in our area of representation.

If there is a "dispute", please come to us at an early stage.

Unfortunately, conflicts do not resolve themselves.

AV ABB member = member of Swiss Employees

Website: [Home - AVABB](#)



**BECOME A MEMBER
EMPLOYEES CH**



FREE LEGAL ADVICE



**COURSE OFFERINGS,
CLA**

[Become a member ! Employees Switzerland](#)

You work hard. So do we. Treat yourself to membership of Employees Switzerland and enjoy all the benefits of a strong organisation.

With your membership, you strengthen the voice of Employees Switzerland and thus make an important contribution to strengthening the rights of employees

Legal advice and comprehensive legal protection in labour and social security law

Health" service line with health insurance advice

Further training events and conferences to keep you in touch with the world of work

Current topics from the world of work and professions to read about on Apunto-online or in our quarterly magazine

ApuntoNetworking and participation in our community. Achieving goals together is easier

Attractive discounts on insurance and banking services as well as special offers for travel and leisure activities

[The collective employment agreement - Swissmem](#)

Q&A

