

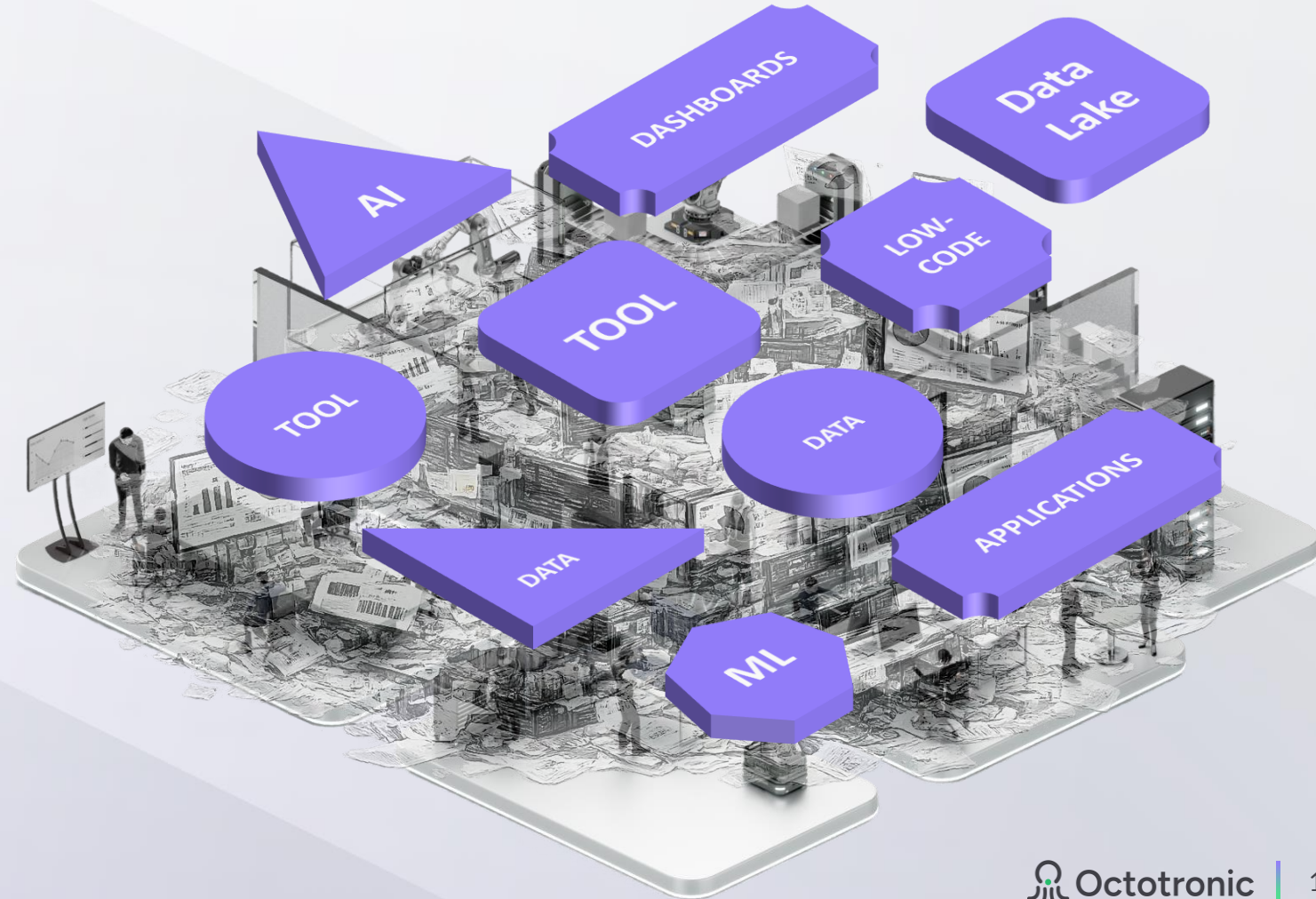
Des silos de données au Shopfloor Analytics

Comment un modèle de données unifié fait la différence

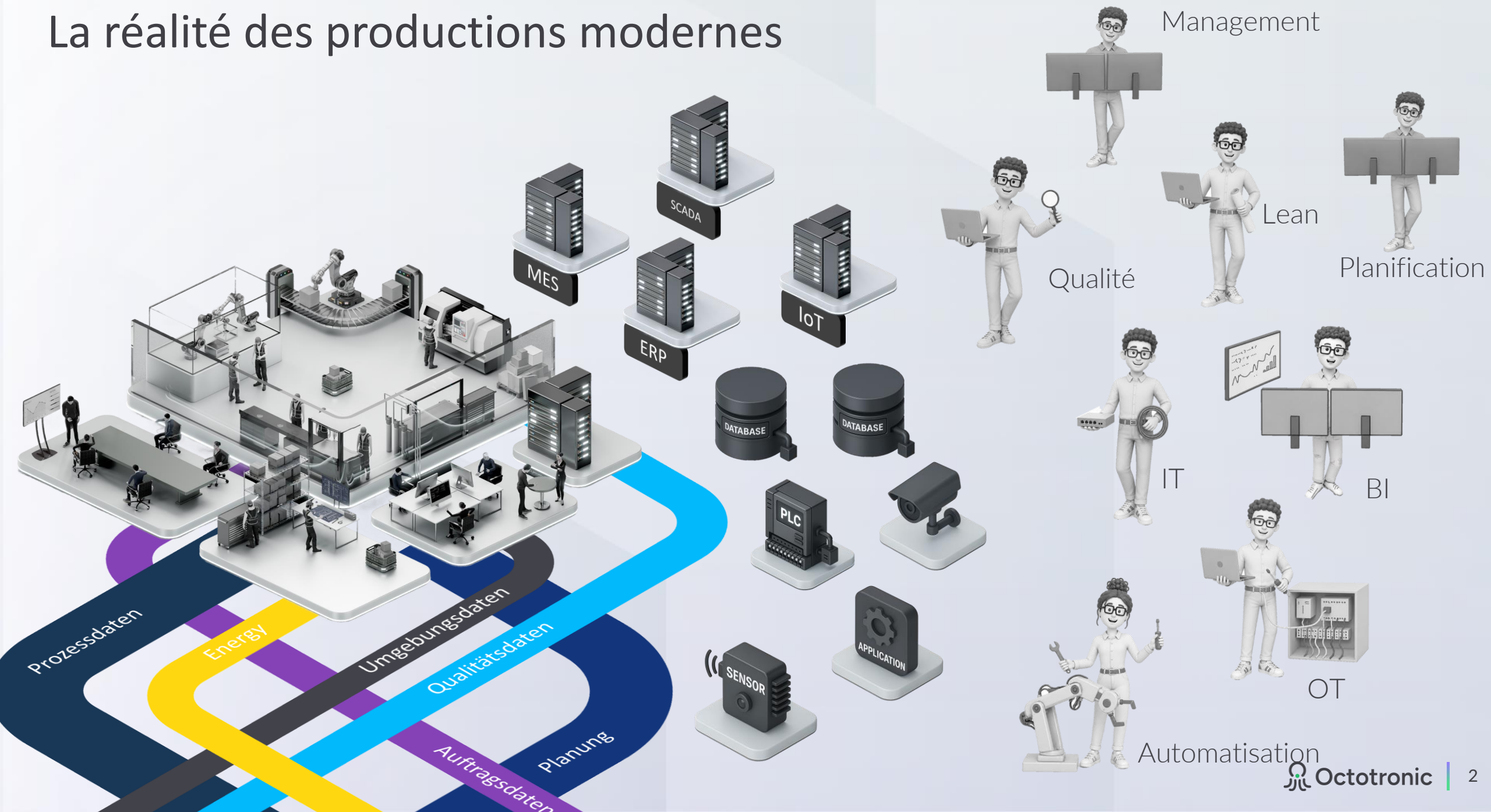


The **Data Intelligence Platform**
Purpose-Built for the **Shop Floor**

OctoCore unifies all production data focusing on Shop Floor, and scaling use cases across plants.



La réalité des productions modernes



L'industrie pense connaître la réponse

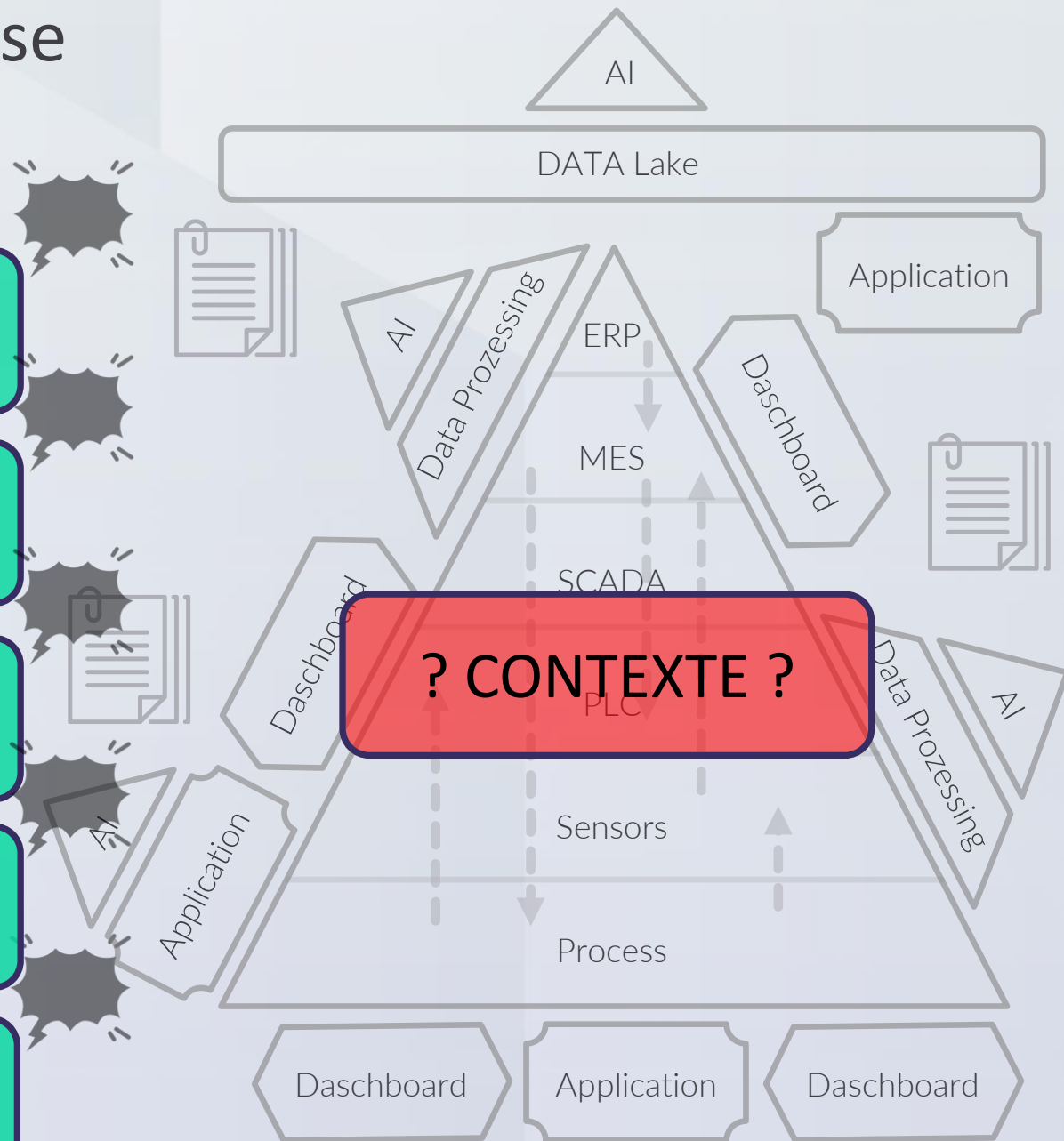
„Nous avons besoin d'un MES.“

„Nous avons besoin de plus de standards.“

„Nous avons besoin de plus de dashboards.“

„Maintenant, nous avons besoin d'AI.“

„Nous devons tout connecter.“



Quatre chiffres. Un problème fondamental sous-estimé.

Les coûts

11%

du chiffre d'affaires annuel est perdu à cause d'arrêts non planifiés

1.4 Billionen USD pro Jahr bei Fortune-Global-500-Unternehmen. Probleme, die nicht frühzeitig erkannt werden, lassen sich später nicht mehr kontrollieren.

Siemens, True Cost of Downtime (2024)

Les coûts cachés

80%

du temps des projets Analytics est consacré à la préparation des données

Noch bevor ein Dashboard, KPI oder AI-Modell entsteht, werden vier von fünf Stunden für das Suchen, Bereinigen und Zusammenführen von Daten verwendet – nicht für Wertschöpfung.

McKinsey (2021), survey of major advanced analytics programs

Pourquoi les projets échouent

76%

des projets de digitalisation industrielle échouent

Laut RAND sind fehlende OT/IT-Integration und mangelhafte Datenqualität die Hauptursachen – nicht die Algorithmen oder fehlendes Talent.

RAND Corporation (2024), industry-segmented AI project failure analysis

Connaissance

70%

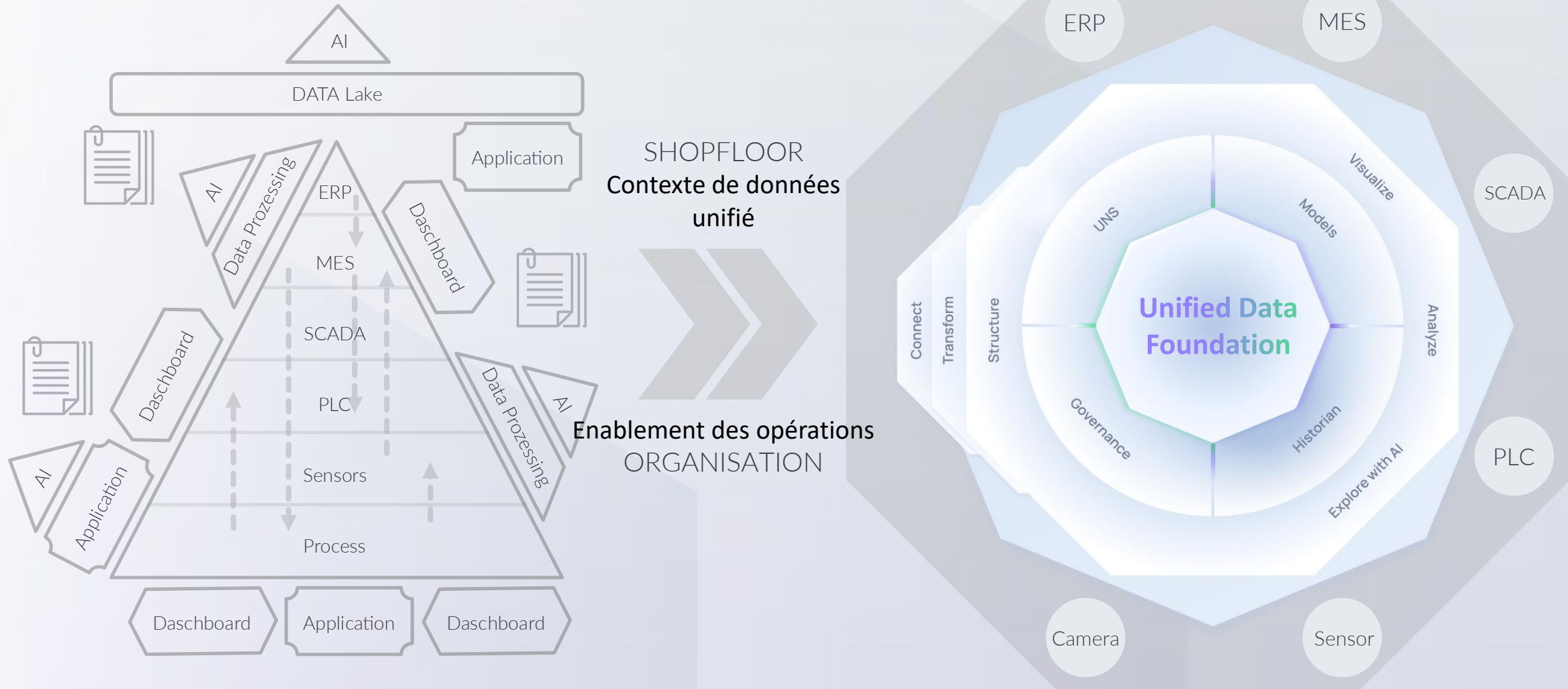
des connaissances opérationnelles ne sont pas documentées

Dieses Wissen wird selten dokumentiert oder strukturiert weitergegeben. Es steckt in den Köpfen erfahrener Mitarbeitender mit jahrzehntelangem Anlagenwissen.

Manufacturing Institute / Deloitte (2025)

Le véritable problème réside dans la fondation des données du shopfloor. Sans contexte, les initiatives AI restent isolées...

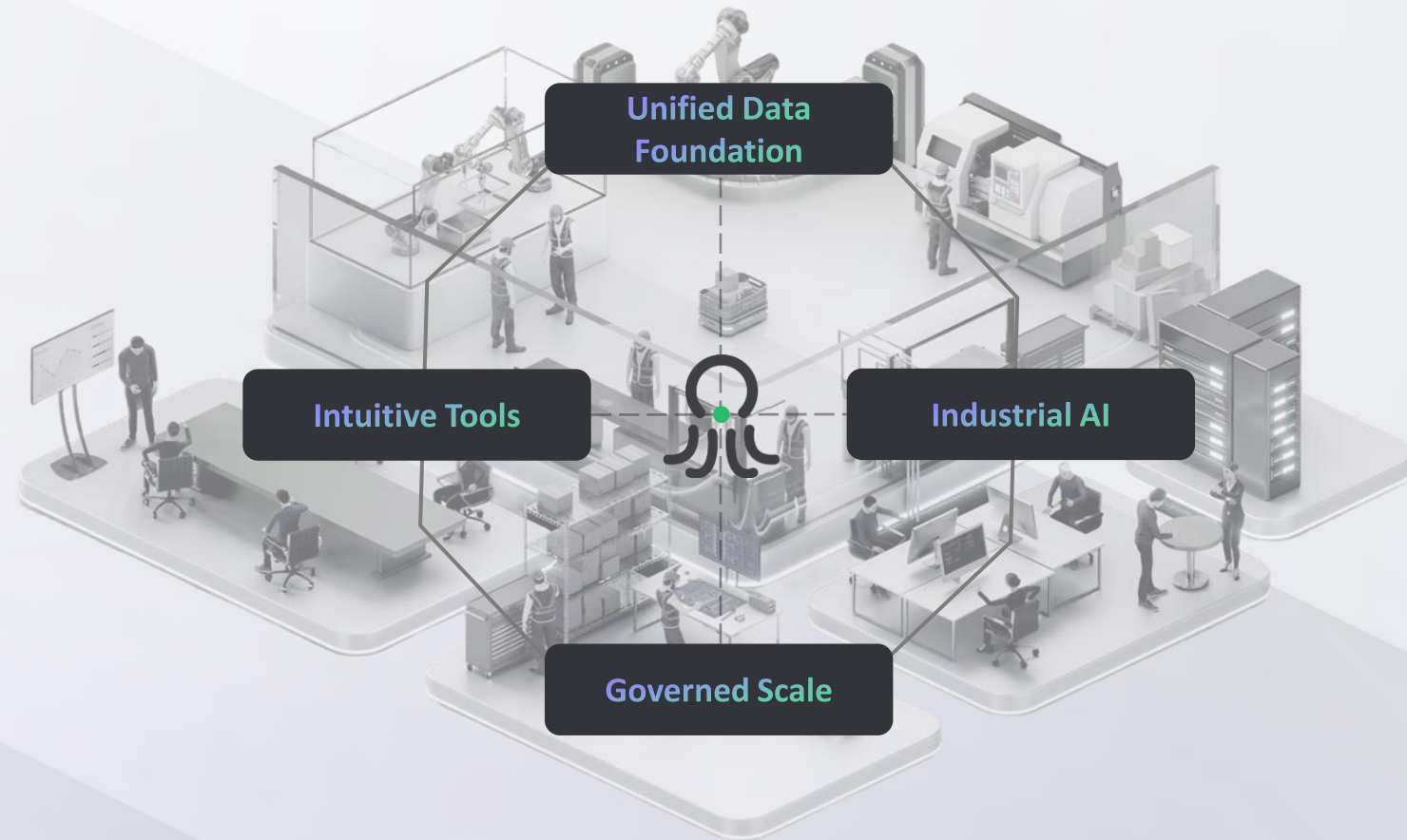
La Smart Factory nécessite une compréhension commune des données



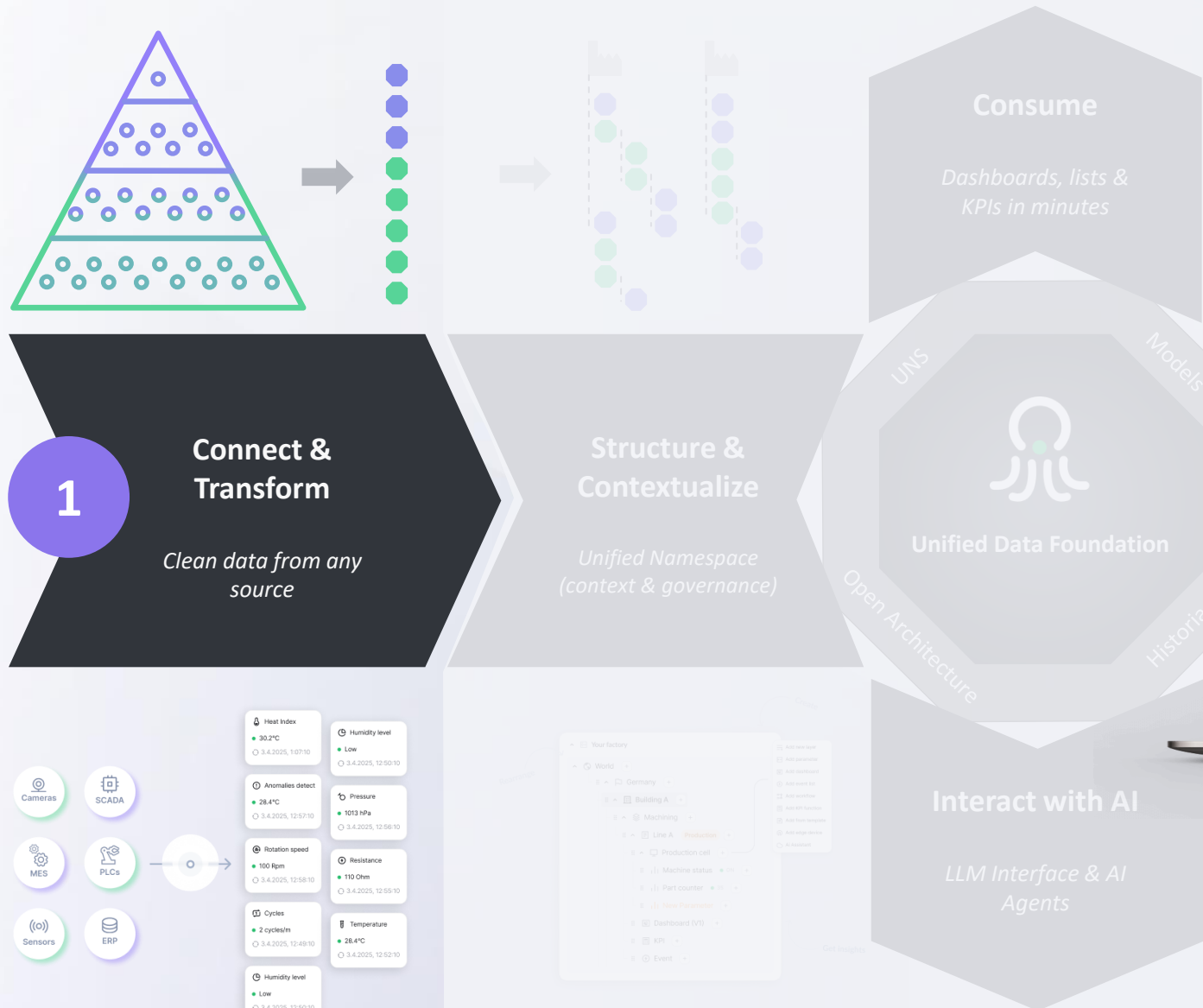


The **Data Intelligence Platform** Purpose-Built for the **Shop Floor**

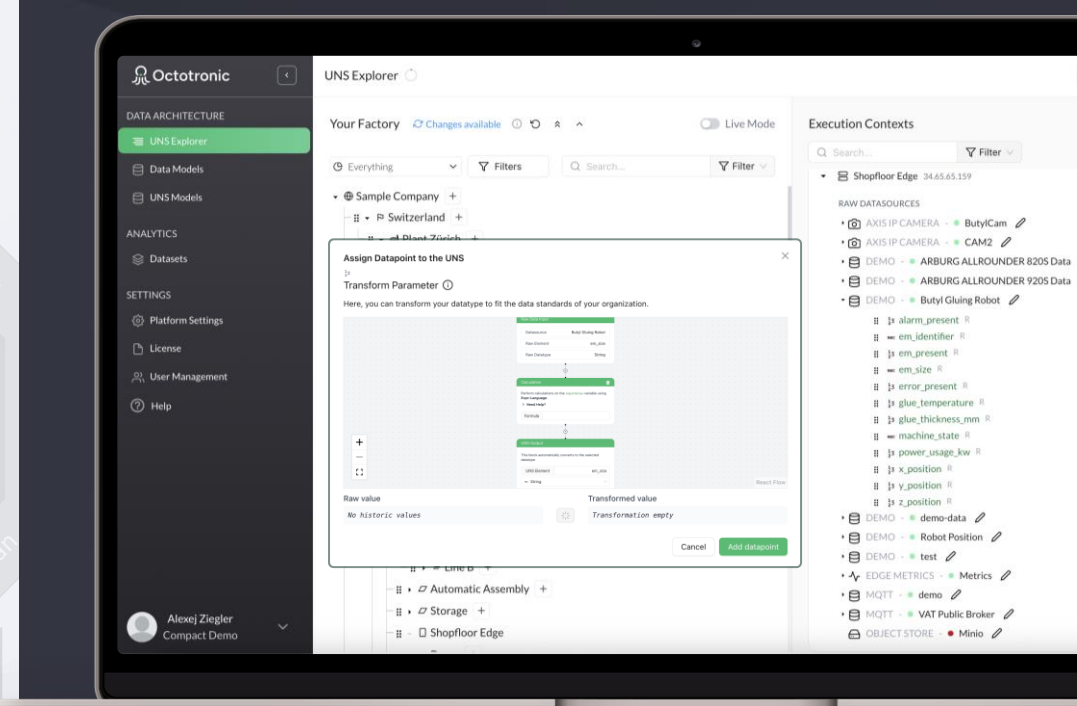
OctoCore unifies all production data focusing on Shop Floor, and scaling use cases across plants.



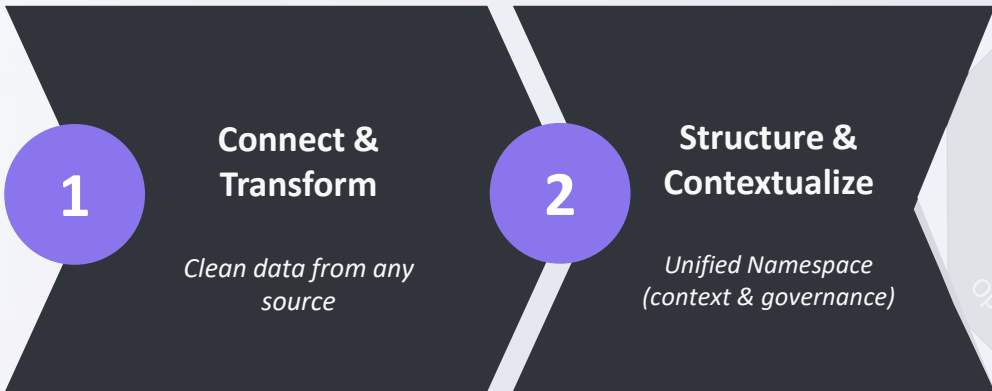
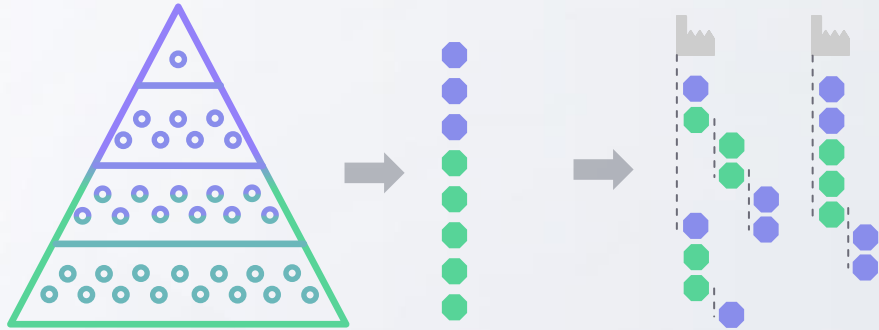
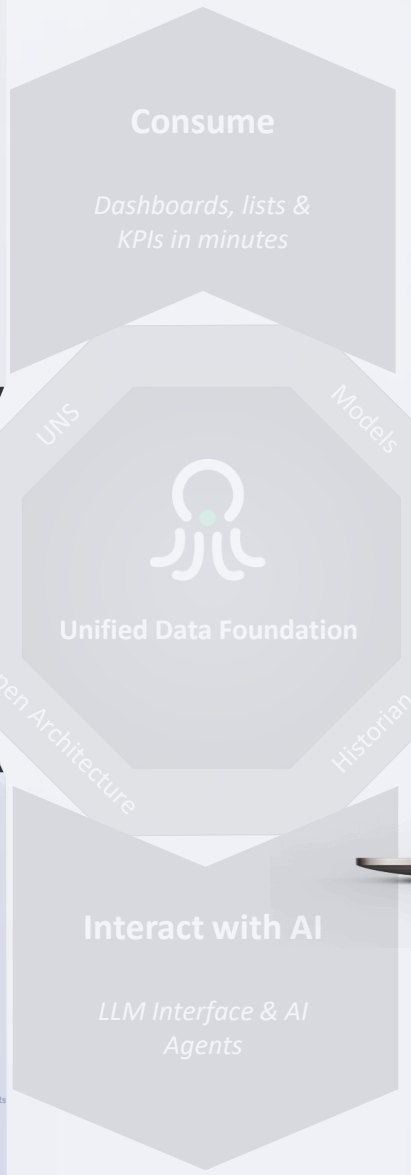
Solution: OctoCore Industrial DataOps



- ## KEY BENEFITS
- ✓ Single source of truth
 - ✓ Protocol agnostic
 - ✓ No IT dependency
 - ✓ Quality at ingestion



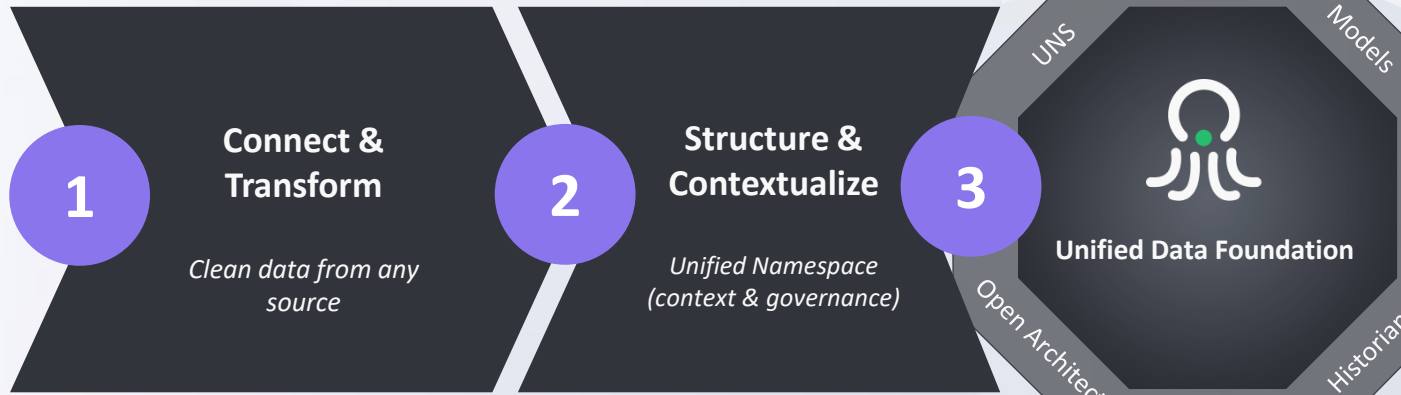
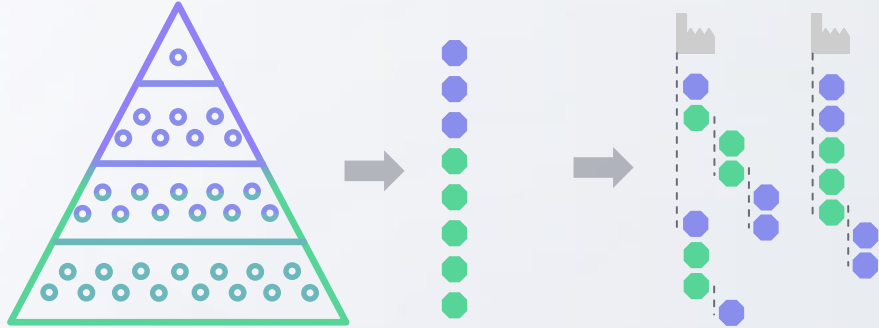
Solution: OctoCore Industrial DataOps

KEY BENEFITS

- ✓ Mirrors your shopfloor
- ✓ Context attached to data
- ✓ Self-service for engineers
- ✓ One model, every role

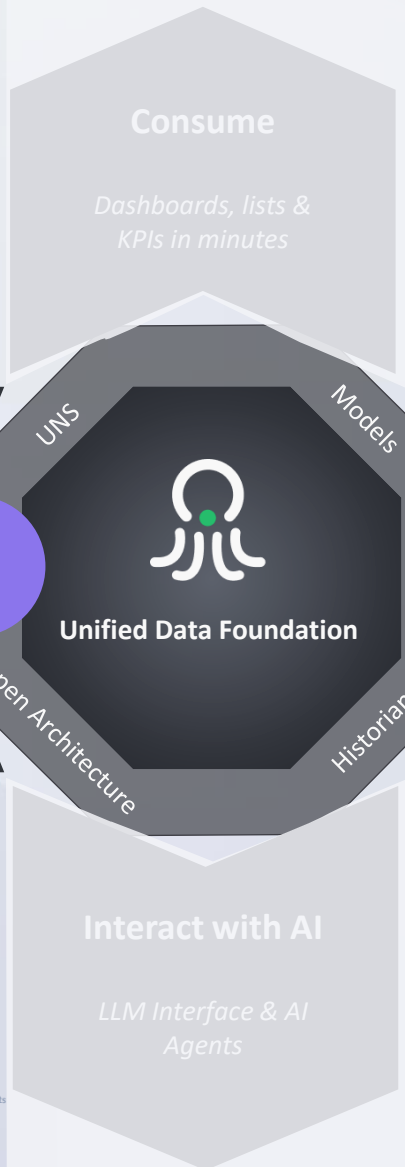
Solution: OctoCore Industrial DataOps



The dashboard displays various industrial metrics and data points:

- Heat Index:** 30.2°C (3.4.2025, 11:07:10)
- Humidity level:** Low (3.4.2025, 12:50:10)
- Anomalies detect:** 28.4°C (3.4.2025, 12:57:10)
- Pressure:** 1013 hPa (3.4.2025, 12:56:10)
- Rotation speed:** 100 Rpm (3.4.2025, 12:58:10)
- Resistance:** 110 Ohm (3.4.2025, 12:55:10)
- Cycles:** 2 cycles/m (3.4.2025, 12:49:10)
- Temperature:** 28.4°C (3.4.2025, 12:52:10)
- Humidity level:** Low (3.4.2025, 12:50:10)

The interface also shows a hierarchical view of the factory structure, including 'Your factory', 'World', 'Germany', 'Building A', 'Machining', 'Line A', 'Production', 'Production cell', 'Machine status', 'Part counter', 'New Parameter', 'Dashboard (V1)', 'KPI', and 'Event'. A 'Create' menu offers options like 'Add new layer', 'Add parameter', 'Add dashboard', 'Add event list', 'Add dashboard', 'Add KPI function', 'Add team template', 'Add edge device', and 'AI Assistant'.



KEY BENEFITS

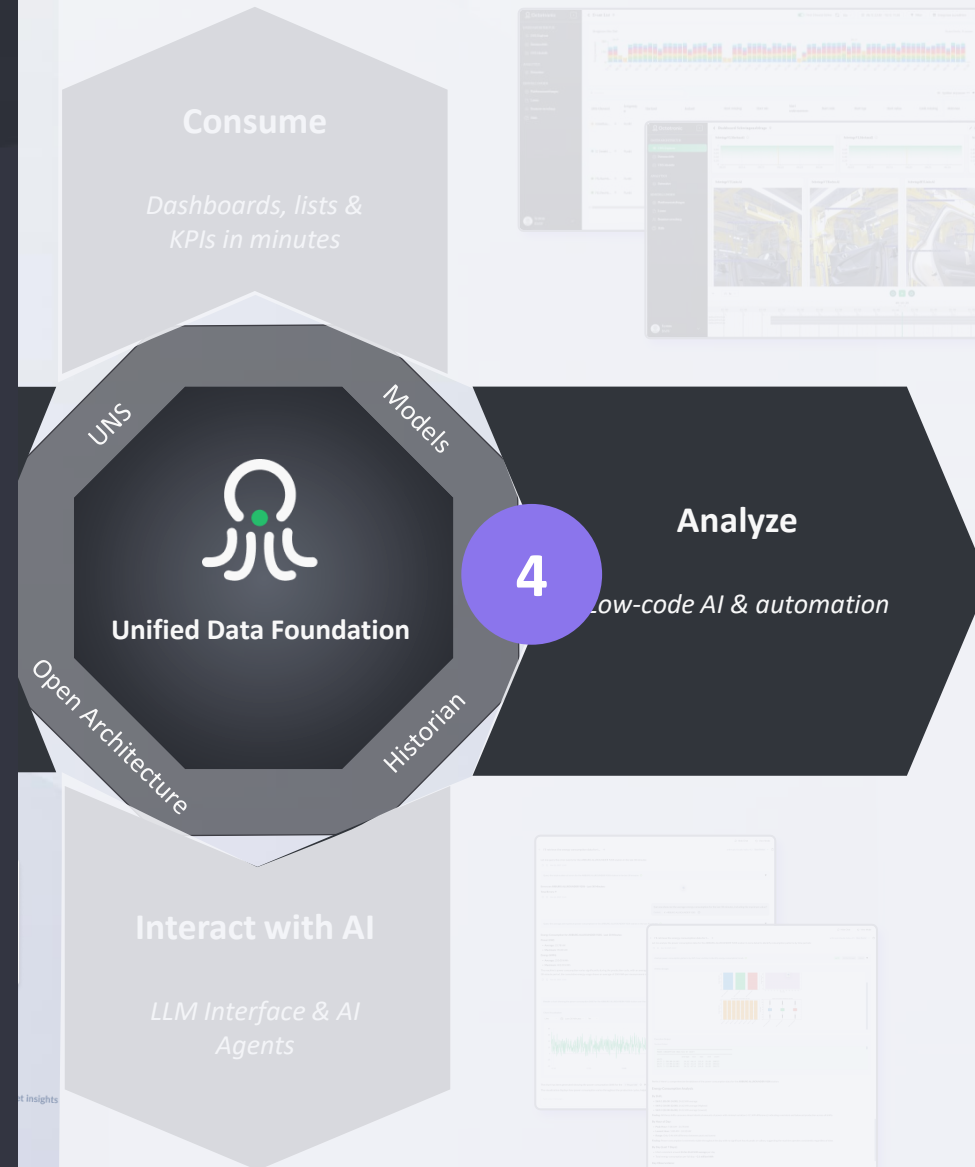
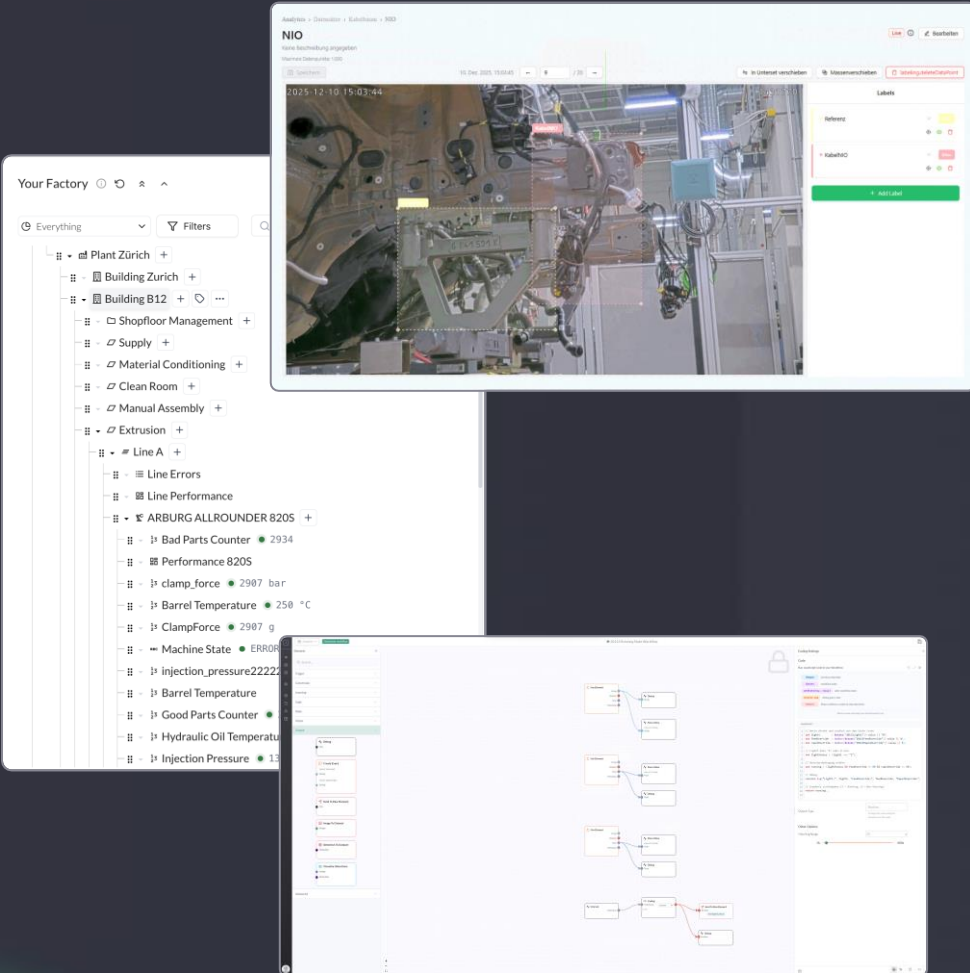
- ✓ Unified Namespace
- ✓ Historian
- ✓ Models
- ✓ Governance
- ✓ Open Architecture

The 3D visualization shows a factory floor with various machines and robots. Blue arrows indicate the flow of data and information between different parts of the factory, highlighting the interconnectedness and open architecture of the system.

KEY BENEFITS

- ✓ Visual dataflow builder
- ✓ Vision + machine data
- ✓ ML model training
- ✓ Insights feed back

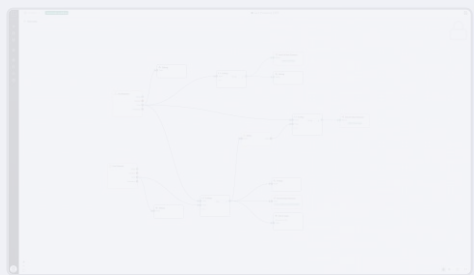
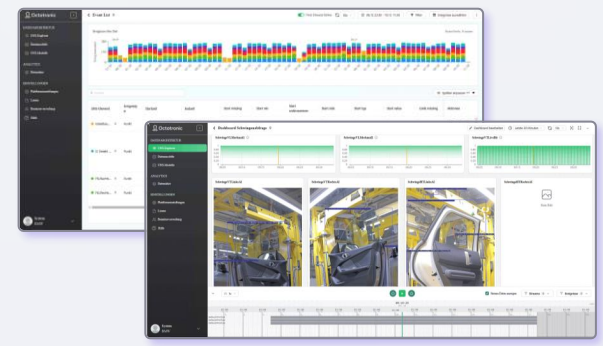
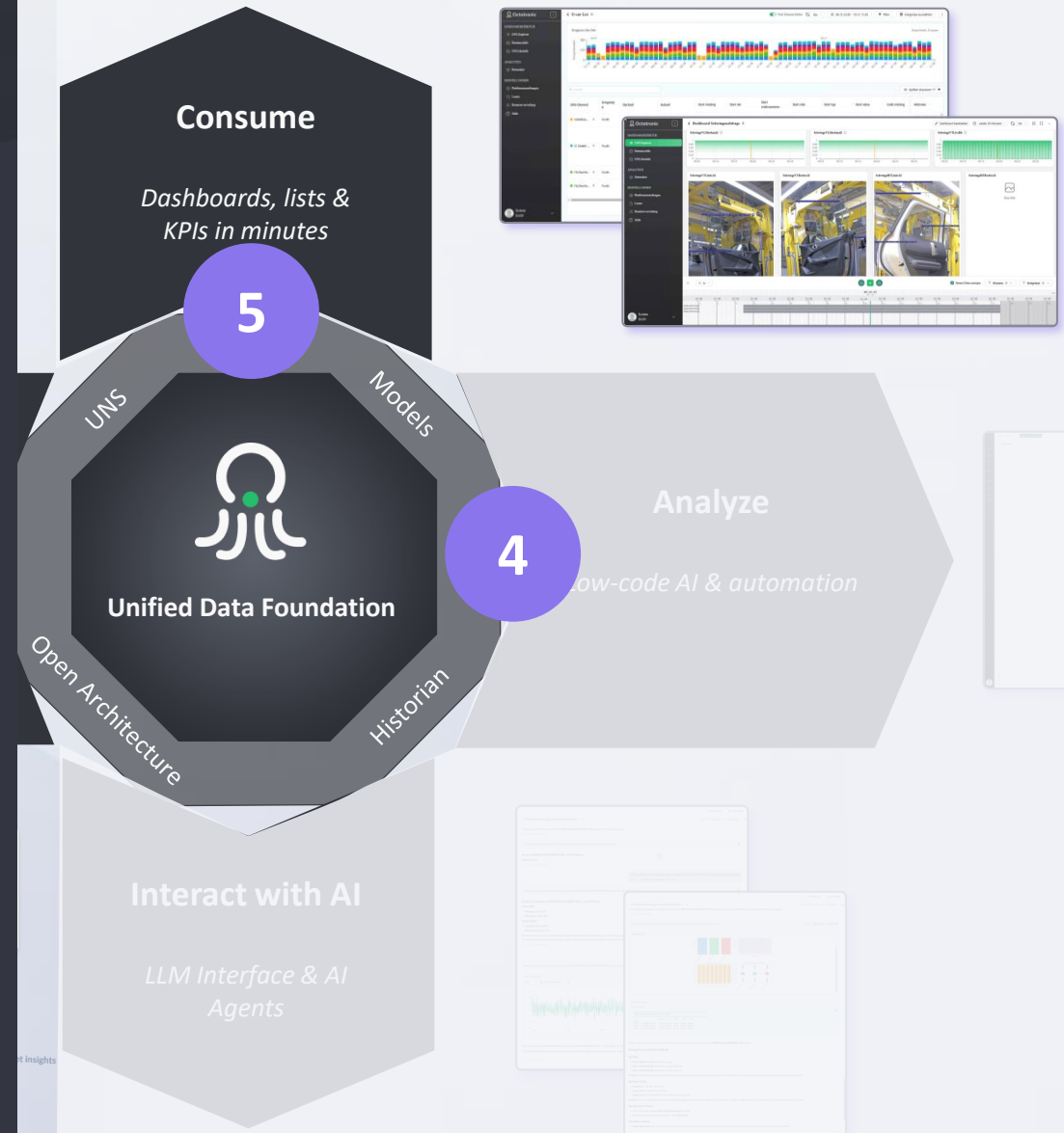
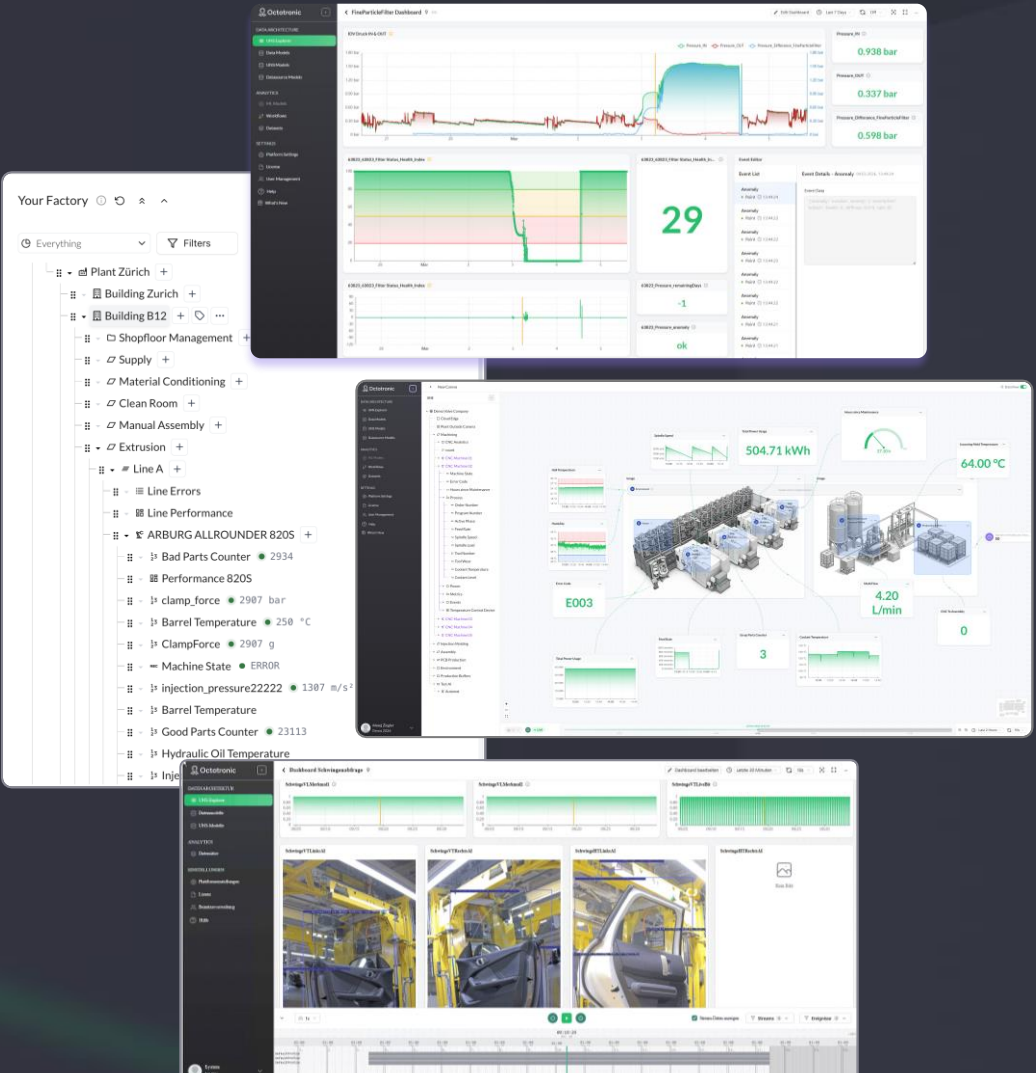
Industrial Analytics



KEY BENEFITS

- ✓ Real-time dashboards
- ✓ Vision + data combined
- ✓ Event lists & alerting
- ✓ Cross-site comparison

Industrial Analytics

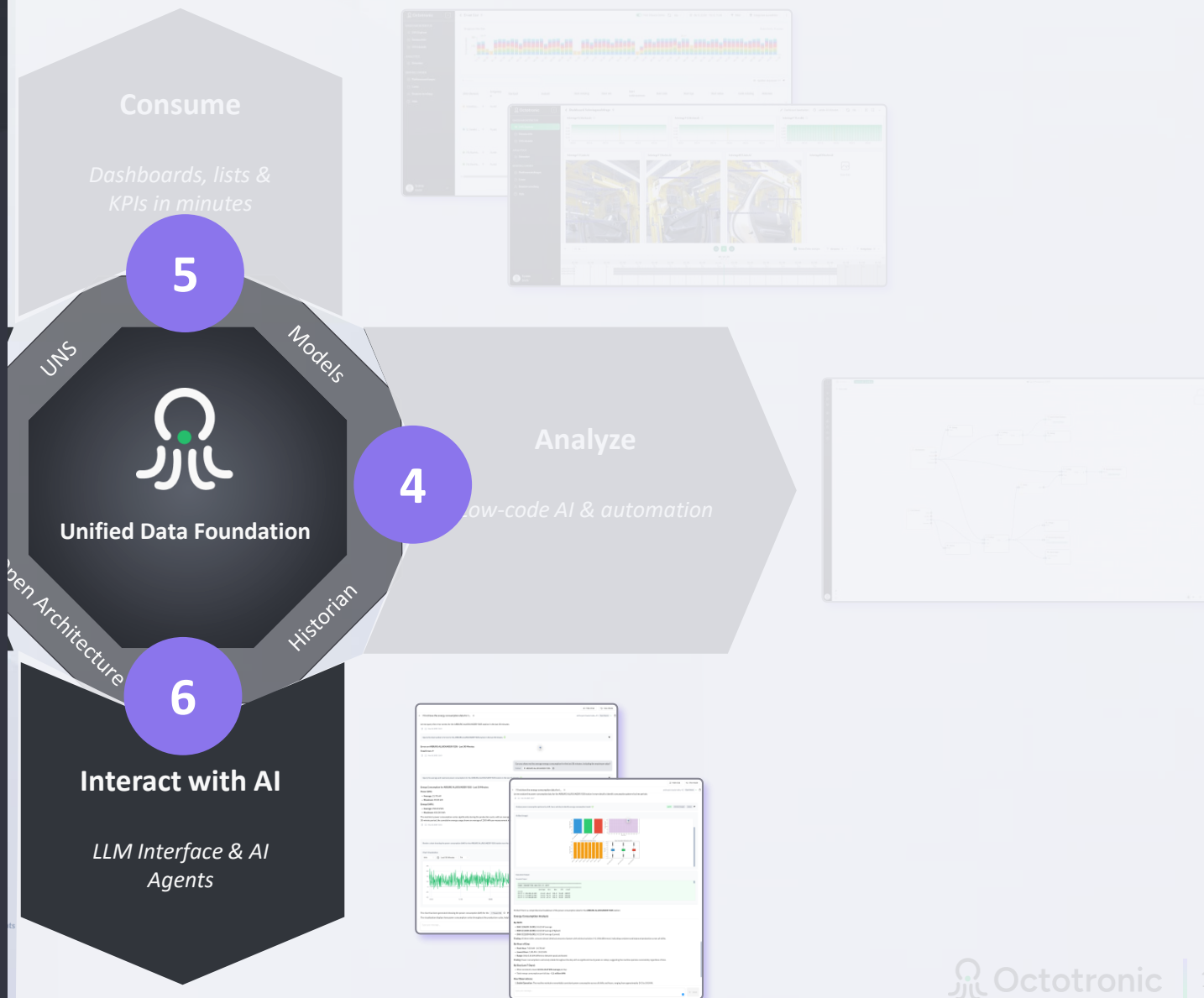


KEY BENEFITS

- ✓ Natural language queries
- ✓ Automated shift reports
- ✓ AI-driven root cause hints
- ✓ Context-aware answers

The interface displays a factory overview for 'Plant Zürich' with a tree view of buildings and production lines. Key metrics for 'Line A' include 'Bad Parts Counter' (2934), 'Performance 820S', 'Clamp Force' (2987 bar), 'Machine State' (ERROR), 'Injection Pressure' (1387 m/s²), 'Barrel Temperature' (250 °C), 'Good Parts Counter' (23113), and 'Hydraulic Oil Temperature'. Several panels show 'Energy Consumption Analysis' with bar charts and tables, and a 'Historian' view with a time-series plot of energy consumption.

Industrial Analytics



Une plateforme. Chaque donnée. Contexte pour AI. ROI réel.

1 Connect

2 Structure

3 Analyze

4 Consume

5 Interact

\$ Intégrations personnalisées coûteuses

🔑 Des dizaines de solutions isolées

🔄 Changement constant d'outils

<> Outils complexes réservés aux spécialistes

🗄️ Standard de données unifié pour le shopfloor

📦 Connectivité plug-and-play

🗄️ Un workspace pour chaque rôle

⚡ Conçu pour les spécialistes des processus — pas uniquement pour les développeurs software

Expérience & présence dans les industries clés

 Automotive & Mobility

BMW GROUP **KION GROUP** **autoneum**

 Food & Beverages


Nestlé

SIG

BACHMANN GROUP

 Medtech & Pharma

YPSOMED
SELF CARE SOLUTIONS

Roche

METTLER TOLEDO

BIOTRONIK

 Industrial Equipment

SCHURTER
ELECTRONIC COMPONENTS



DATWYLER

VAT


SIEMENS

ABB



 Aerospace & Defense

GENERAL DYNAMICS

 Machine Manufacturing

SYNTEGON

steinemann


L'avenir de la Smart Factory est guidé par le contexte.



Alexej Ziegler

CEO Octotronic
Industrial Engineer & Smart Factory
Expert

 +41 79 285 89 80

 alexej.ziegler@octotronic.com

 Technoparkstrasse 1,
8005 Zurich, Switzerland

