



GUIDE 2020
PRODUCTS AND SYSTEMS
ELFORoom²



Inspiring Solutions since 1989





HOME

ELFORoom²

Consistently uniform temperature and lower energy consumption

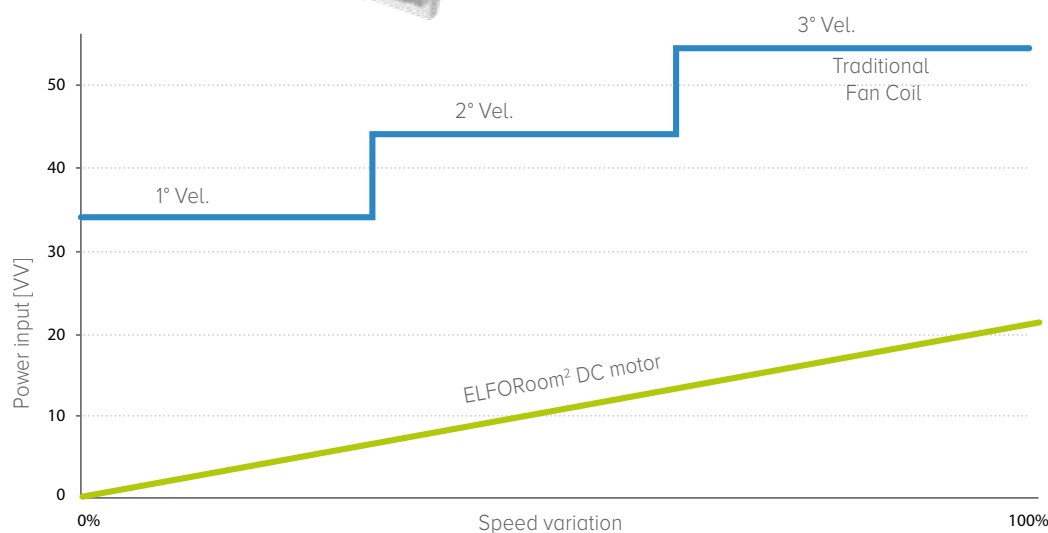
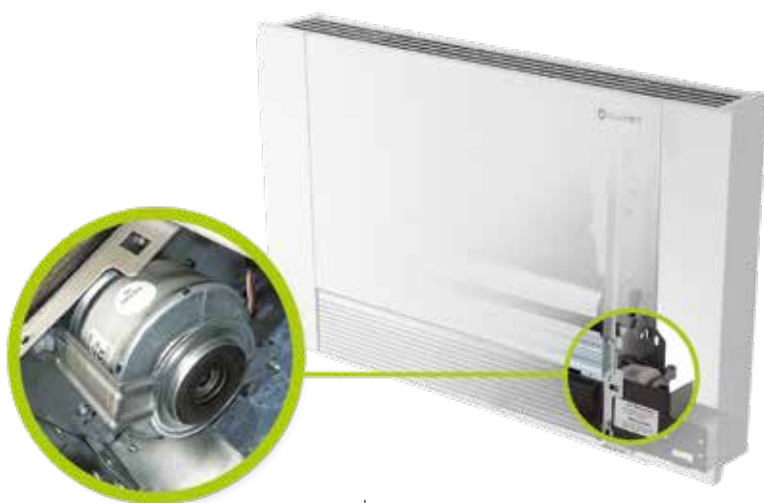
Thanks to the continuous fan operation and the gradual speed variations, ELFORoom² guarantees constant air movement. The exclusive fan electric motor of the ELFORoom² guarantees low energy consumptions thanks to the modulation of ventilation. The innovative technological solution considerably limits the energy generated for its correct operation, reducing the required power and the operating costs if compared to the traditional fan coils.

- ✓ UNIFORM TEMPERATURE
- ✓ LOWER ENERGY CONSUMPTIONS
- ✓ LESS NOISE
- ✓ LARGE AND EASY TO ACCESS FILTER

QUIET OPERATION



The continuously running fan allows to operate the fan coil at very low speeds, making the noise that it produces almost imperceptible. ELFORoom² is equipped with a control system that permits the continuous adjustment of the rpm to suit the system requirements

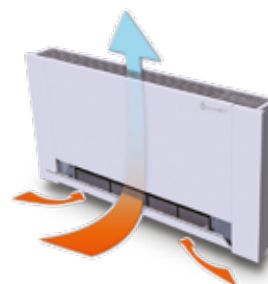


SATISFIES ALL INSTALLATIONS

ELFORoom² is a room terminal that can be installed in any architectural setting as it comes with both a vertical uncased and built-in wall version and a horizontal uncased and built-in ceiling version.

A full range of accessories – such as the feet used for floor installation, the supply and intake plenums, the formwork for built-in installation and many other accessories – make ELFORoom² a complete system to meet a number of installation solutions.

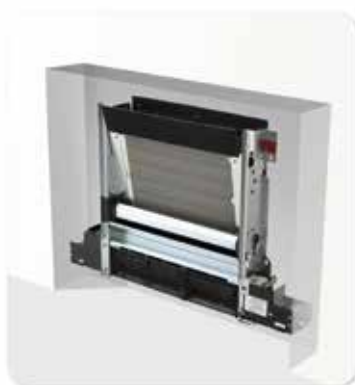
IT CLEANS THE AIR AS IT CONTROLS THE TEMPERATURE



In addition to its complete and flexible temperature control, ELFORoom² also takes care of air quality. In fact, it is equipped with a large filter, easily accessible via the front panel, which ensures efficient air purification and makes it possible to reduce cleaning operations



Vertical cased
installation



Vertical uncased
installation



Horizontal cased
installation



Horizontal uncased
installation



ELFORoom²

ELFORoom² 003.0÷017.0

technical data

Size - ELFORoom²

			003.0	005.0	011.0	015.0	017.0
▶ Cooling capacity	(1)	kW	0,89	1,91	2,83	3,69	4,19
Sensible capacity	(1)	kW	0,65	1,29	1,94	2,50	2,78
Total power input	(1)	kW	0,012	0,020	0,022	0,030	0,033
▶ Heating capacity	(2)	kW	0,93	1,97	2,71	3,45	4,11
Supply airflow	(3)	l/s	45,0	89,0	128	160	180
Type of supply fan	(4)	-	TGZ	TGZ	TGZ	TGZ	TGZ
Standard power supply	(5)	V	230/1/50	230/1/50	230/1/50	230/1/50	230/1/50
L Sound pressure level	(6)	dB(A)	23	26	27	23	27
M Sound pressure level	(6)	dB(A)	32	32	33	30	37
H Sound pressure level	(6)	dB(A)	39	40	39	39	43

(1) Ambient air at 27°C/19.5 W.B.; inlet water 7°C and outlet 12°C; Air flow at max speed measured with clean filters

(2) Ambient temperature 20°C DB; Water inlet 45°C and outlet 40°C; Air flow at max speed measured with clean filters

(3) Air flow at max speed measured with clean filters

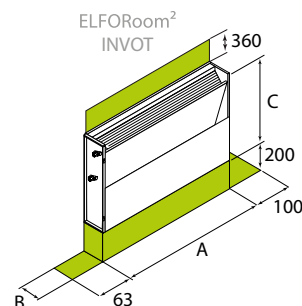
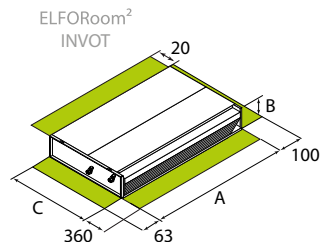
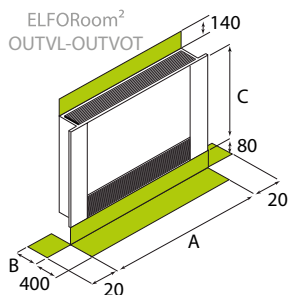
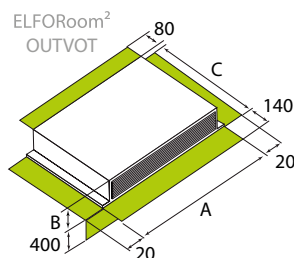
(4) TGZ=tangential

(5) Power supply 230/1/50 Hz +/-10%

(6) The values have been detected in a closed ambient with a volume of 100 m³ and a reverberation time of 0.5 seconds. The sound levels are referred to unit operating at a full load in nominal conditions. The sound pressure level is referred at a distance of 1m. from the external unit surface, with fairing, fitted to a wall. Please note that when the unit is installed in conditions other than nominal test conditions /for example near walls or obstacles in general) the sound levels may undergo substantial variation.

L Low speed (L)
M Medium speed (M)
H High speed (H)

dimensions



CAUTION!

For trouble-free operation of the unit it is essential to maintain the safety distances indicated by the green areas.

ELFORoom² cased version OUTVOT-OUTVL

Size		003.0	005.0	011.0	015.0	017.0
A - Length	mm	737	937	1137	1337	1537
B - Width	mm	130	130	130	130	130
C - Height	mm	579	579	579	579	579
Operating weight	kg	17	20	23	26	29

ELFORoom² uncased version INVOT

Size		003.0	005.0	011.0	015.0	017.0
A - Length	mm	527	727	927	1127	1327
B - Width	mm	130	130	130	130	130
C - Height	mm	586	586	586	586	586
Operating weight	kg	9	12	15	18	21

The above mentioned data are referred to standard units.

Refrig. R-410A

ELFOControl³EVO

DC Motor



Water room terminal

accessories

Size - ELFORoom ²	003.0	005.0	011.0	015.0	017.0
Basic configuration (OUTVL - 230/1/50) Vertical cased with LCD display, continuous modulation DC motor, RS485 interface and built-in thermostat	std	std	std	std	std
Basic configuration (OUTVOT - 230/1/50) Vertical - Horizontal cased with continuous modulation DC motor, RS485 interface without built-in thermostat	std	std	std	std	std
Basic configuration (INVOT - 230/1/50) Vertical - Horizontal uncased with continuous modulation DC motor, RS485 interface without built-in thermostat	std	std	std	std	std
Basic configuration (OUTRAD - 230/1/50) Vertical cased with continuous modulation DC motor, RS485 interface with built-in thermostat and ventilated radiant plate	std	std	std	std	std
Basic configuration (OUTSRAD - 230/1/50) Vertical cased with continuous modulation DC motor, RS485 interface, without built-in thermostat and with ventilated radiant plate	std	std	std	std	std
Basic configuration (INRAD - 230/1/50) Vertical uncased with continuous modulation DC motor, RS485 interface, without built-in thermostat and with ventilated radiant plate (Available only with PCIX-CSFIX)	std	std	std	std	std

B4T	Additional coil for 4-pipe syst.	HIDE2X	Remote control with E/I +3V +on/off for wall installation (Available only with SC3V)
KASPX	Return plenum kit	HIDE3X	Plurifunctional remote control for wall installation (Available only with SC3V)
GMX	Outlet grille	HIDT2X	HID-T2 electronic room control
GRA1X	Air outflow grille	HIDT3X	HID-T3 electronic room control
PR90MX	90° air outlet plenum	HIDTI2X	HID-TI2 Flush-mounted electronic room control
PMSTX	Telescopic upper supply plenum kit	KCMDX	Motor connection cables for unit with couplings on the right
KV3B4X	3-way valve kit with electrothermal head and balancing for 4-pipe system (Available only with B4T)	BACKVX	Painted rear panel for cased version
KV3VBX	3-way valve kit with electrothermal head and balancing	PCIX	Uncased closure panel
CSEMP	Simplified electronic control with 4 speeds DC motor, built-in thermostat without RS485 interface (with option: OUTVL - OUTRAD)	CSFIX	Formwork for uncased installation
SC3V	DC motor modulation electronic board for matching to 3 speeds thermostats	FXPPX	Floor fixing bracket kit
SC010	DC motor modulation electronic board for matching to 0-10V thermostats	KPDX	Plinth kit
HIDE1X	Remote control with 3 position switch + on/off for wall installation (Available only with SC3V)	UV	UV germicidal lamp kit with support

Accessories whose code ends with "X" are separately supplied.

FOR OVER 30 YEARS WE HAVE BEEN OFFERING
SOLUTIONS TO ENSURE SUSTAINABLE COMFORT
AND THE WELL-BEING OF
PEOPLE AND THE ENVIRONMENT

www.clivet.com



Valid from: January 2020
DG20A004GB-00 (EC1)



CLIVET S.p.A.
Via Camp Lonc 25, Z.I. Villapaiera
32032 Feltre (BL) - Italy
Tel. +39 0439 3131 - Fax +39 0439 313300
info@clivet.it

A Group Company of

