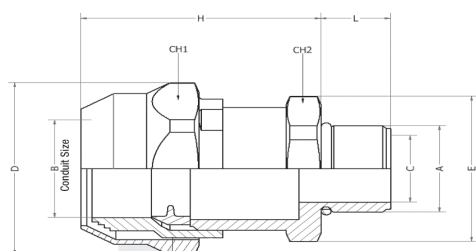


EXBQ range Metallic fittings



Features

- Manufactured in nickel plated brass
- Approved for use in Ex e applications for Zones 1, 2, 21 & 22
- Available in Metric & NPT thread
- EXPQM for use with unbraided nylon conduit
- EXBQA for use with braided nylon conduit

Approvals



Certification & Standards

Approved to:	IEC EN 60079-0, 60079-7, 60079-31
EC TYPE Examination Certificate:	ATEX: Baseefa 08 ATEX 0003X IECEX: IECEX BAS08.0001X Ex e IIC Gb Ex tb IIIC Db
Safe operating temperature range:	-40°C to +85°C
IP test:	IP66

Part No.	Thread Size A	Nominal conduit size B (mm)	Cable gland dimensions (mm)						
			C	D	E	L	H	CH1	CH2
EXBQM0303	M16	16.0	11.4	27.4	25.9	16.0	33.3	25.4	24.0
EXBQM0304	M20	16.0	11.4	25.9	27.4	20.0	32.5	24.0	25.4
EXBQM0404	M20	21.0	15.8	30.2	30.2	20.0	31.5	28.0	28.0
EXBQM0505	M25	28.0	19.0	41.0	41.0	20.2	38.3	38.0	38.0
EXBQM0606	M32	34.0	26.4	45.4	48.1	24.2	40.0	42.0	44.5
EXBQM0707	M40	42.0	32.9	58.3	61.6	25.8	49.5	54.0	57.0
EXBQM0808	M50	54.0	40.7	75.6	75.6	26.1	48.0	70.0	70.0
EXBQA0304	1/2" NPT	16.0	11.4	33.2	26.6	20.0	44.5	30.0	24.0
EXBQA0404	1/2" NPT	21.0	15.8	38.8	31.0	20.0	45.0	35.0	28.0
EXBQA0505	3/4" NPT	28.0	19.0	49.3	42.1	20.2	54.0	44.5	38.0
EXBQA0606	1" NPT	34.0	26.4	55.4	46.5	24.2	57.5	50.0	42.0
EXBQA0707	1 1/4" NPT	42.0	32.9	77.6	59.8	25.8	70.0	70.0	54.0
EXBQA0808	1 1/2" NPT	54.0	40.7	93.1	77.6	26.1	70.0	84.0	70.0

CMG House, Station Road, Coleshill, Birmingham, B46 1HT United Kingdom
 Tel: +44 (0) 1675 468 213 | Email: sales@kopex.co.uk
www.tnb-hazardous.com

The Company's policy is one of continuous improvement and reserves the right to change specifications at any time without prior notice.

Power and productivity
for a better world™

