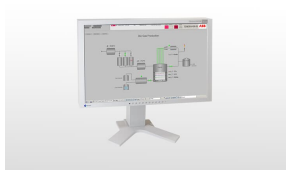


PRODUCT-DETAILS

# 3BSE091827R1

## Compact HMI 6.0.3 Base License



### General Information

Product ID	3BSE091827R1
ABB Type Designation	CHMI 6.0.3
Catalog Description	Compact HMI 6.0.3 Base License
Long Description	Base License for one combined HMI Operator and Engineering Workplace Server. Plant Explorer, Aspect Server and Softpoint Server, Scheduler, Primary History Logs, PLC Connect, PLC Connect Dial-Up, Compact HMI Alarm Operations, SMS & Email Messaging, Audit trail, Advanced Access Control, Digital Signature, Graphics Builder & Symbol factory. No media is included.

### Additional Information

Medium Description	Base License for one combined HMI Operator and Engineering Workplace Server. Plant Explorer, Aspect Server and Softpoint Server, Scheduler, Primary History Logs, PLC Connect, PLC Connect Dial-Up, Compact HMI Alarm Operations, SMS & Email Messaging, Audit trail, Advanced Access Control, Digital Signature, Graphics Builder & Symbol factory. No media is included.
Product Type	Licenses
Technical Information	Base License for one combined HMI Operator and Engineering Workplace Server. Plant Explorer, Aspect Server and Softpoint Server, Scheduler, Primary History Logs, PLC Connect, PLC Connect Dial-Up, Compact HMI Alarm Operations, SMS & Email Messaging, Audit trail, Advanced Access Control, Digital Signature, Graphics Builder & Symbol factory. No media is

included.

Ordering

Customs Tariff Number

99999999

Dimensions

Product Net Weight

0 kg

Environmental

RoHS Status

No declaration needed

WEEE Category

Product Not in WEEE Scope

Categories

Control System Products → Software Products → Operations → Compact HMI → Compact HMI - Base Licenses → Compact HMI 6.0.3 Base License

Control Systems → Compact Product Suite → Operations → Compact HMI → Compact HMI 6.0 → Licenses

