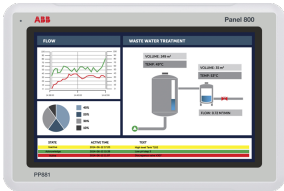


PRODUCT-DETAILS

3BSE092978R1

PP881 Standard Panel 10"



General Information	
Product ID	3BSE092978R1
ABB Type Designation	PP881
Catalog Description	PP881 Standard Panel 10"
1024x600 widescreen (16:9). Requires Panel Builder 800 Version 6.2 for configuration.	
Long Description	To protect the front, it's recommended to use the RX881 Touch cover. Replaces PP877. For mounting in the same cut-out as PP877, RX800 Adapter plate is required.

Additional Information	
Medium Description	1024x600 widescreen (16:9). Requires Panel Builder 800 Version 6.2 for configuration. To protect the front, it's recommended to use the RX881 Touch cover. Replaces PP877. For mounting in the same cut-out as PP877, RX800 Adapter plate is required.
Product Type	Control_System_Accessory

Ordering	
HS Code	847141-- Automatic data processing machines and units thereof; magnetic or optical readers, machines for transcribing data onto data media in coded form and machines for processing such data, not elsewhere specified or included.- Other automatic data processing machines :--

Comprising in the same housing at least a central processing unit and an input and output unit, whether or not combined	
Customs Tariff Number	84714100

Dimensions

Product Net Depth / Length	52 mm
Product Net Height	194 mm
Product Net Width	292 mm
Product Net Weight	1.65 kg

Environmental

RoHS Status	Following EU Directive 2011/65/EU
WEEE Category	2. Screens, Monitors, and Equipment Containing Screens Having a Surface Greater Than 100 cm
Number of Batteries	1
Battery Chemical Composition	Lithium
Battery Type	Button Cell
Battery Weight	2.5 g
Screen Size	10.1 in
SCIP	No SVHC present Taiwan, Province Of China (TW)

Categories

Control System Products → Panel HMI → Panel 800 → Panel 800 - Operator Panels → PP881 Standard Panels → PP881 Standard Panel 10"

Control Systems → 800xA → Operations → Panel 800

Control Systems → Compact Product Suite → Operations → Panel 800

Control Systems → Freelance → Operations → Panel 800

