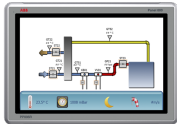


PRODUCT-DETAILS

3BSE092985R1

PP886R Rugged Panel 15"



General Information	
Product ID	3BSE092985R1
ABB Type Designation	PP886R
Catalog Description	PP886R Rugged Panel 15"
1280x800 widescreen (16:10). Requires Panel Builder 800 Version 6.2 for configuration.	
Long Description	To protect the front, it's recommended to use the RX886 Touch cover. Replaces PP885R. One ethernet port.

Additional Information	
Medium Description	1280x800 widescreen (16:10). Requires Panel Builder 800 Version 6.2 for configuration. To protect the front, it's recommended to use the RX886 Touch cover. Replaces PP885R. One ethernet port.
Product Type	Control_System_Accessory

Ordering	
HS Code	847141-- Automatic data processing machines and units thereof; magnetic or optical readers, machines for transcribing data onto data media in coded form and machines for processing such data, not elsewhere specified or included.- Other automatic data processing machines :-- Comprising in the same housing at least a central processing unit and an input and output unit, whether or not combined

Customs Tariff Number

84714100

Dimensions

Product Net Depth / Length	73 mm
Product Net Height	286 mm
Product Net Width	410 mm
Product Net Weight	4.1 kg

Environmental

RoHS Status	Following EU Directive 2011/65/EU
WEEE Category	2. Screens, Monitors, and Equipment Containing Screens Having a Surface Greater Than 100 cm
Number of Batteries	1
Battery Chemical Composition	Lithium
Battery Type	Button Cell
Battery Weight	3.2 g
Screen Size	15.4 in
SCIP	No SVHC present Taiwan, Province Of China (TW)

Categories

Control System Products → Panel HMI → Panel 800 → Panel 800 - Operator Panels → PP886R Rugged Panels → PP886R Rugged Panel 15"

Control Systems → 800xA → Operations → Panel 800

Control Systems → Compact Product Suite → Operations → Panel 800

Control Systems → Freelance → Operations → Panel 800

