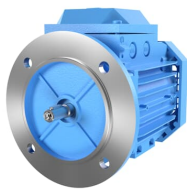


PRODUCT-DETAILS

3GAA051311-BSF

IE2 High Efficiency Aluminum Motors, 0.09 kW, 400 V (3GAA051311-BSF)



General Information

Product ID	3GAA051311-BSF
ABB Type Designation	M3AA 56A 2
Catalog Description	IE2 High Efficiency Aluminum Motors, 0.09 kW, 400 V (3GAA051311-BSF)

Ordering

ABB Type Designation	M3AA 56A 2
Product Name	3-Phase squirrel cage motor
Product Type	3AA2_M3AA_IE2_AA
Made To Order	No
Minimum Order Quantity	1 piece
Order Multiple	1 piece
Selling Unit of Measure	piece
Country of Origin	China (CN)
Customs Tariff Number	85015100
Replaced Product ID (OLD)	3GAA051001-BSE
Stocked At (Warehouses)	Menden, Germany Vittuone, Italy
Medium Description	0.09kW, 2 Poles, Frame Size 56, 3 Phases, 400V, 50Hz, IP55 Enclosure, IMB5/IM3001 Mounting (3GAA051311-BSF)
Short Description	0.09kW, 2P, Frame Size 56, 3PH, 400V, 50Hz, IP55, IMB5/IM3001

Electrical

Electrical Data											
Conn	Temp Class	Freq	Voltage	Power	Speed	Current	Power Factor	Efficiency	Torque	IS/IN	
Y	--	50 Hz	400 V	0.09 kW	2800 r/min	0.35 A	0.670	55.60 %	0.29 N·m	3.50	
D	--	50 Hz	230 V	0.09 kW	2800 r/min	0.60 A	0.670	55.60 %	0.29 N·m	3.50	
Y	--	60 Hz	460 V	0.09 kW	3430 r/min	0.33 A	0.600	56.80 %	0.23 N·m	3.90	
Connection Configuration											Y
Temperature Class Default											--
Input Voltage (U _{in})											400 V
Frequency (f)											50 Hz
Output Power											0.09 kW
Altitude											1000 m
Ambient Temperature											40 °C
IC Class											IC411
IE Class Data (50 Hz)											IE Class NA Full Load (100%) 55.6 % Partial Load (75%) 50.8 % Partial Load (50%) 38.7 %
IE Class Data (60 Hz)											IE Class NA Full Load (100%) 56.8 % Partial Load (75%) 50.6 % Partial Load (50%) 40.5 %
IP Class											IP55
Insulation Class											ICLF
Direction of Rotation											Both sides
Number of Poles (High)											2
Two Speed Motor											No
Type of Duty											S1
Voltage Code											S

Mechanical

Frame Material	Aluminum
Frame Size	56
Bearing	6201-2Z/C3
Bearing NDE	6201-2Z/C3
IM Class	IMB5 IM3001
Terminator Box Location	D-End top

Dimensions

Package Level 1 Units	0 carton
Product Net Depth / Length	183 mm
Product Net Height	143 mm
Product Net Width	110 mm
Product Net Weight	2.8 kg
Gross Weight	3.8 kg

Environmental

WEEE Category	5. Small Equipment (No External Dimension More Than 50 cm)
---------------	--

Classifications	
UNSPSC	26101100

Categories
Motors and Generators → IEC Low Voltage AC Motors → Process Performance Motors → IE2 High Efficiency Aluminum Motors

