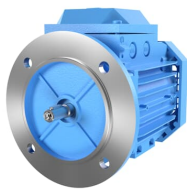




PRODUCT-DETAILS

3GAA063311-BSF

IE2 High Efficiency Aluminum Motors, 0.09 kW,
400 V (3GAA063311-BSF)



General Information

Product ID	3GAA063311-BSF
ABB Type Designation	M3AA 63A 6
Catalog Description	IE2 High Efficiency Aluminum Motors, 0.09 kW, 400 V (3GAA063311-BSF)

Ordering

ABB Type Designation	M3AA 63A 6
Product Name	3-Phase squirrel cage motor
Product Type	3AA2_M3AA_IE2_AA
Made To Order	No
Minimum Order Quantity	1 piece
Order Multiple	1 piece
Selling Unit of Measure	piece
Country of Origin	China (CN)
Customs Tariff Number	85015100
Replaced Product ID (OLD)	3GAA063001-BSC 3GAA063001-BSE 3GVA063001-BSC 3GAA063311-BSE
Stocked At (Warehouses)	Menden, Germany Sant Quirze del Vallés - BCN, Spain Vittuone, Italy
Medium Description	0.09kW, 6 Poles, Frame Size 63, 3 Phases, 400V, 50Hz, IP55 Enclosure, IMB5/IM3001 Mounting (3GAA063311-BSF)

Short Description0.09kW, 6P, Frame Size 63, 3PH, 400V, 50Hz, IP55, IMB5/IM3001

Electrical

Electrical Data

Conn	Temp Class	Freq	Voltage	Power	Speed	Current	Power Factor	Efficiency	Torque	IS/IN
Y	--	50 Hz	400 V	0.09 kW	890 r/min	0.41 A	0.620	50.70 %	0.96 N·m	2.80
D	--	50 Hz	230 V	0.09 kW	890 r/min	0.71 A	0.620	50.70 %	0.96 N·m	2.80
Y	--	60 Hz	460 V	0.09 kW	1110 r/min	0.38 A	0.550	53.40 %	0.76 N·m	3.20

Connection Configuration	Y
Temperature Class Default	--
Input Voltage (U _{in})	400 V
Frequency (f)	50 Hz
Output Power	0.09 kW
Altitude	1000 m
Ambient Temperature	40 °C
IC Class	IC411
IE Class Data (50 Hz)	IE Class NA Full Load (100%) 50.7 % Partial Load (75%) 48.5 % Partial Load (50%) 42.0 %
IE Class Data (60 Hz)	IE Class NA Full Load (100%) 53.4 % Partial Load (75%) 48.9 % Partial Load (50%) 40.6 %
IP Class	IP55
Insulation Class	ICLF
Direction of Rotation	Both sides
Number of Poles (High)	6
Two Speed Motor	No
Type of Duty	S1
Voltage Code	S

Mechanical

Frame Material	Aluminum
Frame Size	63
Bearing	6201-2Z/C3
Bearing NDE	6201-2Z/C3
IM Class	IMB5 IM3001
Terminator Box Location	D-End top

Dimensions

Package Level 1 Units	0 carton
Product Net Depth / Length	208 mm
Product Net Height	154 mm
Product Net Width	124 mm
Product Net Weight	4.2 kg
Gross Weight	5.2 kg

Environmental

WEEE Category	5. Small Equipment (No External Dimension More Than 50 cm)
---------------	--

Classifications	
UNSPSC	26101100

Categories	
Motors and Generators → IEC Low Voltage AC Motors → Process Performance Motors → IE2 High Efficiency Aluminum Motors	

