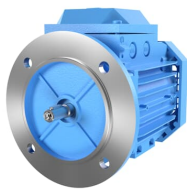




PRODUCT-DETAILS

3GAA064312-BSF

IE2 High Efficiency Aluminum Motors, 0.06 kW, 400 V (3GAA064312-BSF)



General Information

| | |
|----------------------|----------------------------------------------------------------------|
| Product ID | 3GAA064312-BSF |
| ABB Type Designation | M3AA 63B 8 |
| Catalog Description | IE2 High Efficiency Aluminum Motors, 0.06 kW, 400 V (3GAA064312-BSF) |

Ordering

| | |
|---------------------------|-------------------------------------------------------------------------------------------------------------|
| ABB Type Designation | M3AA 63B 8 |
| Product Name | 3-Phase squirrel cage motor |
| Product Type | 3AA2_M3AA_IE2_AA |
| Made To Order | No |
| Minimum Order Quantity | 1 piece |
| Order Multiple | 1 piece |
| Selling Unit of Measure | piece |
| Country of Origin | China (CN) Romania (RO) |
| Customs Tariff Number | 85015100 |
| Replaced Product ID (OLD) | 3GAA064002-BSE 3GAA064002-BSC |
| Stocked At (Warehouses) | Vittuone, Italy |
| Medium Description | 0.06kW, 8 Poles, Frame Size 63, 3 Phases, 400V, 50Hz, IP55 Enclosure, IMB5/IM3001 Mounting (3GAA064312-BSF) |
| Short Description | 0.06kW, 8P, Frame Size 63, 3PH, 400V, 50Hz, IP55, IMB5/IM3001 |

Electrical

| Electrical Data | | | | | | | | | | | |
|----------------------------------|------------|-------|---------|---------|-----------|---------|--------------|------------|----------|-------|--------------------------------------------------------------------------------------------------|
| Conn | Temp Class | Freq | Voltage | Power | Speed | Current | Power Factor | Efficiency | Torque | IS/IN | |
| Y | -- | 50 Hz | 400 V | 0.06 kW | 685 r/min | 0.46 A | 0.490 | 35.00 % | 0.77 N·m | 1.80 | |
| D | -- | 50 Hz | 230 V | 0.06 kW | 685 r/min | 0.80 A | 0.490 | 35.00 % | 0.77 N·m | 1.80 | |
| Y | -- | 60 Hz | 460 V | 0.06 kW | 850 r/min | 0.45 A | 0.420 | 36.90 % | 0.62 N·m | 2.00 | |
| Connection Configuration | | | | | | | | | | | Y |
| Temperature Class Default | | | | | | | | | | | -- |
| Input Voltage (U _{in}) | | | | | | | | | | | 400 V |
| Frequency (f) | | | | | | | | | | | 50 Hz |
| Output Power | | | | | | | | | | | 0.06 kW |
| Altitude | | | | | | | | | | | 1000 m |
| Ambient Temperature | | | | | | | | | | | 40 °C |
| IC Class | | | | | | | | | | | IC411 |
| IE Class Data (50 Hz) | | | | | | | | | | | IE Class NA Full Load (100%) 35.0 % Partial Load (75%) 31.0 % Partial Load (50%) 24.8 % |
| IE Class Data (60 Hz) | | | | | | | | | | | IE Class NA Full Load (100%) 36.9 % Partial Load (75%) 31.7 % Partial Load (50%) 24.3 % |
| IP Class | | | | | | | | | | | IP55 |
| Insulation Class | | | | | | | | | | | ICLF |
| Direction of Rotation | | | | | | | | | | | Both sides |
| Number of Poles (High) | | | | | | | | | | | 8 |
| Two Speed Motor | | | | | | | | | | | No |
| Type of Duty | | | | | | | | | | | S1 |
| Voltage Code | | | | | | | | | | | S |

Mechanical

| | |
|-------------------------|-------------|
| Frame Material | Aluminum |
| Frame Size | 63 |
| Bearing | 6201-2Z/C3 |
| Bearing NDE | 6201-2Z/C3 |
| IM Class | IMB5 IM3001 |
| Terminator Box Location | D-End top |

Dimensions

| | |
|----------------------------|----------|
| Package Level 1 Units | 0 carton |
| Product Net Depth / Length | 208 mm |
| Product Net Height | 154 mm |
| Product Net Width | 124 mm |
| Product Net Weight | 4.45 kg |
| Gross Weight | 5.45 kg |

Classifications

| | |
|--------|----------|
| UNSPSC | 26101100 |
|--------|----------|

Categories

Motors and Generators → IEC Low Voltage AC Motors → Process Performance Motors → IE2 High Efficiency Aluminum Motors

